



## Richmond Hill, TW10

£5,500 Per calendar month

This rarely available three bedroom apartment is situated in this popular development on Richmond Hill with fantastic views over directly of the River Thames.

Hillbrow is situated on the top of Richmond Hill in an extremely sought after location overlooking the Terrace Gardens and The River Thames.

### Features

- Three Bedrooms
- River Views
- Two Bathrooms
- Utility Room
- Balcony
- Sought-After Location
- Richmond Hill location



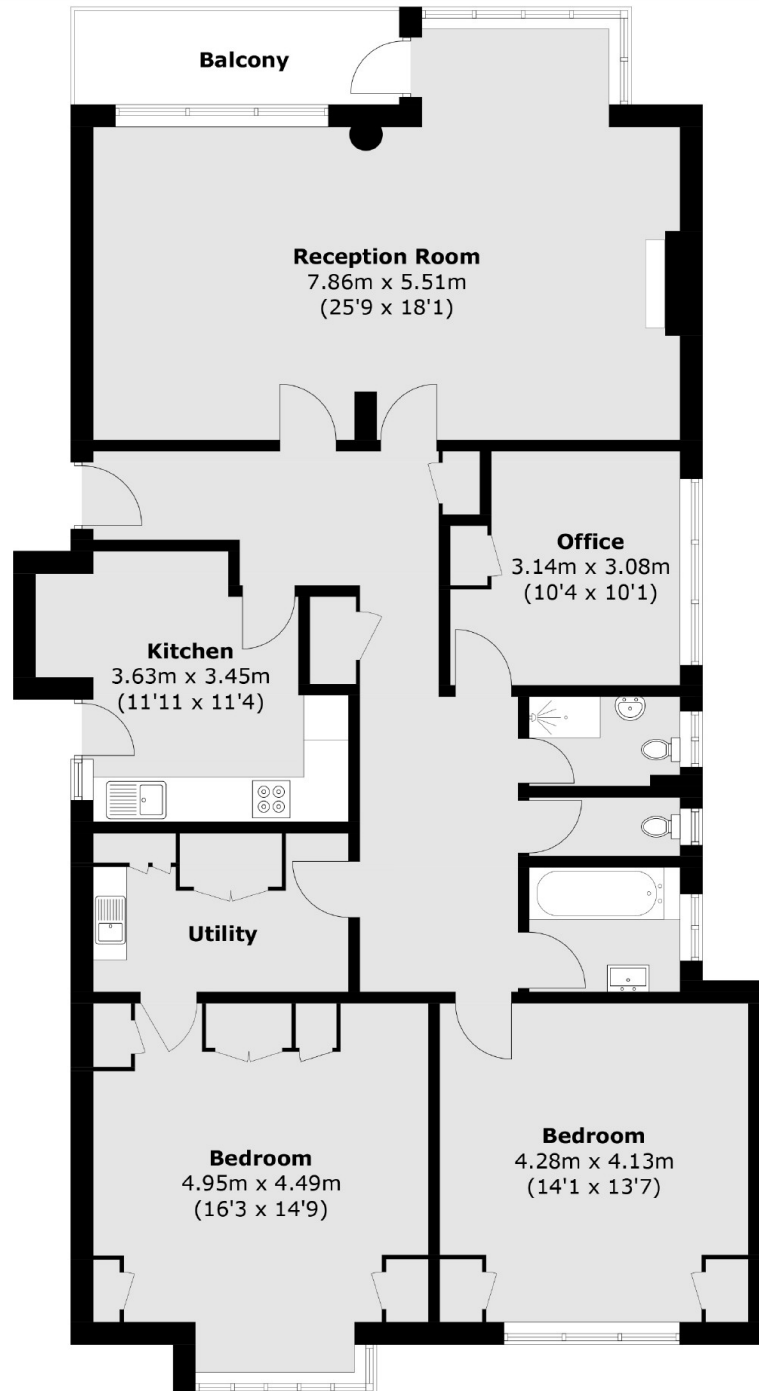
## Richmond Hill, TW10

This spacious 1,463 sq ft property offers ample room throughout, featuring a large double reception area that opens onto a balcony with views of the River Thames.

The modern eat-in kitchen is perfect for dining, and the convenience of a separate utility room adds extra functionality. With three generously size double bedrooms and two bathrooms, this property provides an abundance of living space, making it ideal for comfortable, contemporary living.



# Richmond Hill, Richmond, TW10



Total area (approx.): 136.0 sq. m (1,463.9 sq. ft)  
Balcony area (approx.): 5.5 sq. m (59.2 sq. ft)