



## Watermill Close, TW10

### £450,000

A split level, two bedroom property laid out over 865 sq ft. The maisonette property is entered via its own front door on the ground floor with staircase leading to the first floor. The first floor accommodation comprises a large reception room and semi open plan kitchen dining room to the rear.

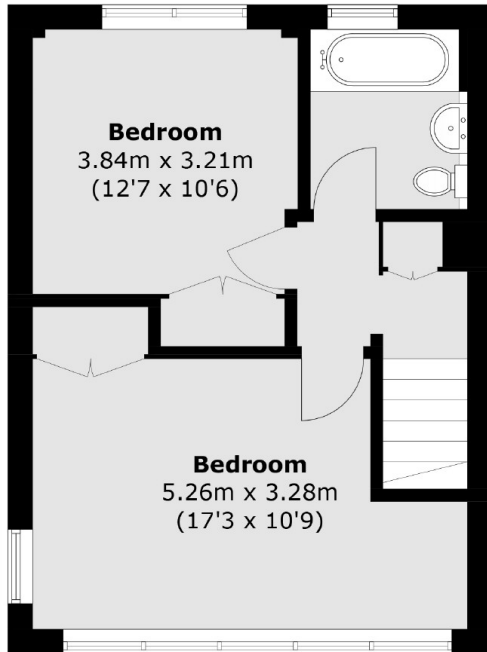
The second floor consists of two large double bedrooms and a family bathroom. The property is offered to the market with a Share of Freehold and no onward chain.

Watermill Close is situated just off Broughton Avenue in green and leafy Ham, moments from Ham Lands, the River Thames, Teddington Lock and Ham Common. There is a choice of regular bus services into Richmond and Kingston where can be found train and tube services into Central London.

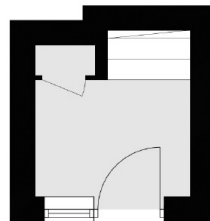
### Features

- Two Double Bedrooms
- Spacious Reception Room
- Kitchen/Dining Room
- Maisonette
- Share Of Freehold
- No Onward Chain

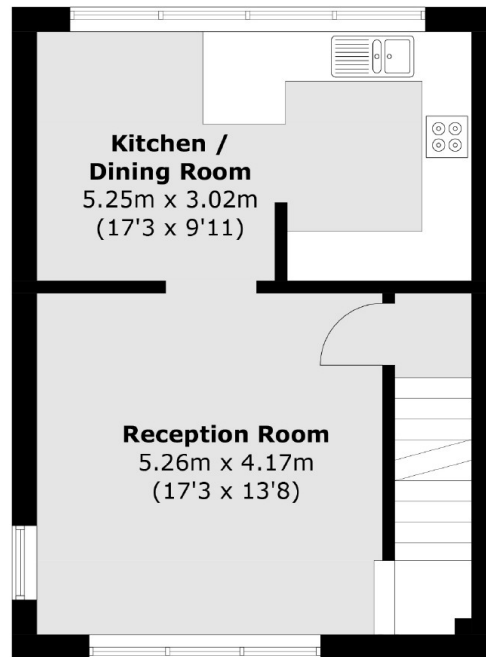
# Watermill Close, Ham, TW10



**Second Floor**



**Ground Floor**



**First Floor**

Total area (approx.): 80.4 sq. m (865.4 sq. ft)