



## Old Palace Lane, TW9

£1,700 Per calendar month

This one bedroom flat offers an open-plan living room with space for living and dining and high ceilings. There is a contemporary kitchen with fitted appliances, principle bedroom with ample storage and shower room.

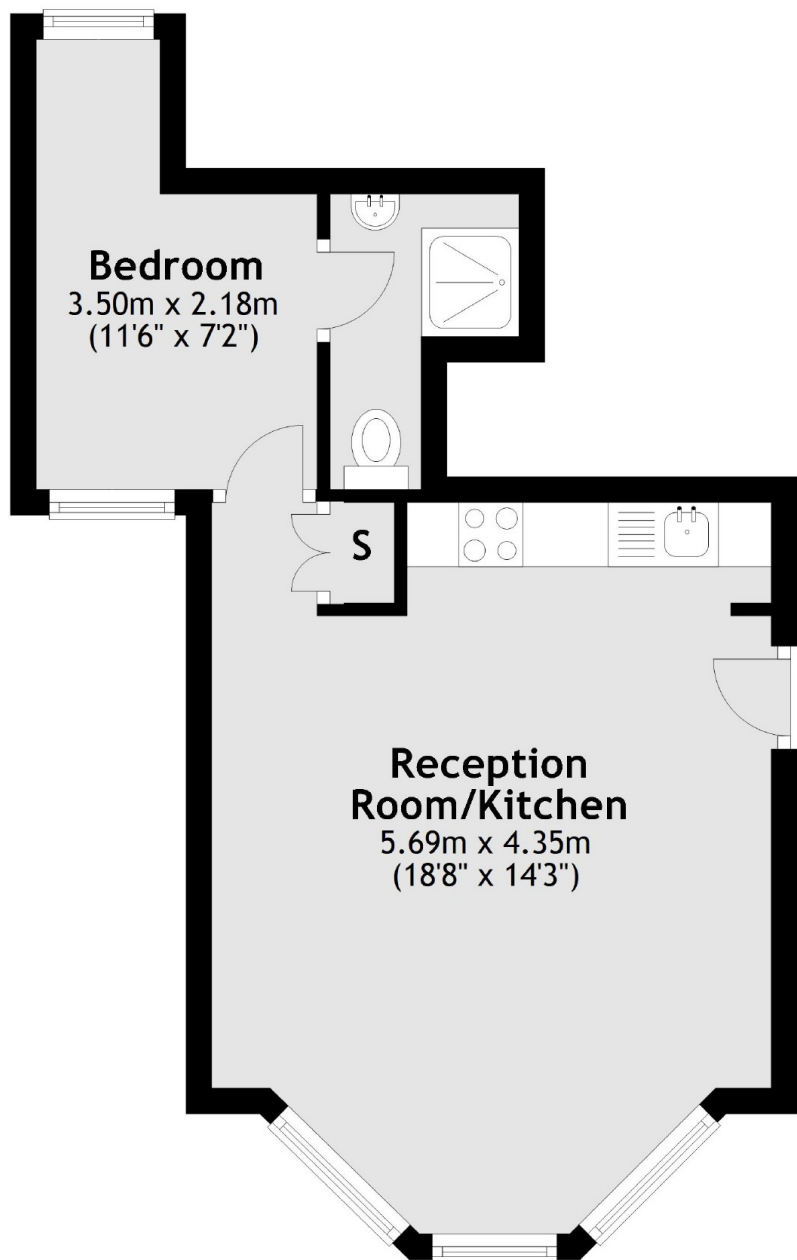
The property is located on a unique road that leads from Richmond Green down to the River Thames, moments from a range of shops, cafés, bars, restaurants and Richmond's mainline station and District Line service.

### Features

- One Bedroom
- Raised Ground Floor
- High Ceilings
- Richmond Green
- Modern Kitchen
- Fitted Appliances

**Old Palace Lane,  
Richmond, TW9**

## Ground Floor



Total area: approx. 31.5 sq. metres (339.1 sq. feet)

**Dexters**

Richmond  
1 Sheen Road  
Richmond  
TW9 1AD  
Lettings  
020 8288 0828

Energy Rating: D. We aim to make our particulars both accurate and reliable. However they are not guaranteed; nor do they form part of an offer or contract. If you require clarification on any points then please contact us, especially if you're traveling some distance to view. Please note that appliances and heating systems have not been tested and therefore no warranties can be given as to their good working order.

 **RICS** | Regulated  
Estate Agent  
and Letting Agent

dexters.co.uk