



Albert Road, TW10

£1,250,000

A rarely available, larger-than-usual two bedroom double fronted cottage on three floors in the ever popular Alberts, on a spacious corner location with a south-west facing orientation. This property includes a modern kitchen, reception room and dining room each with wooden floors and a spiral staircase down to a cellar room. The property also has its own courtyard ideal for off-street parking and a patio garden.

The Alberts is a thriving community that enjoys various amenities including cafés, pubs and parks on the door step. Richmond station is approximately 0.5 miles away and provides an excellent over ground and underground service.

Features

- The Alberts
- Two Bedrooms
- Off Street Parking
- Cellar Room
- Courtyard
- Double Fronted



Albert Road, TW10

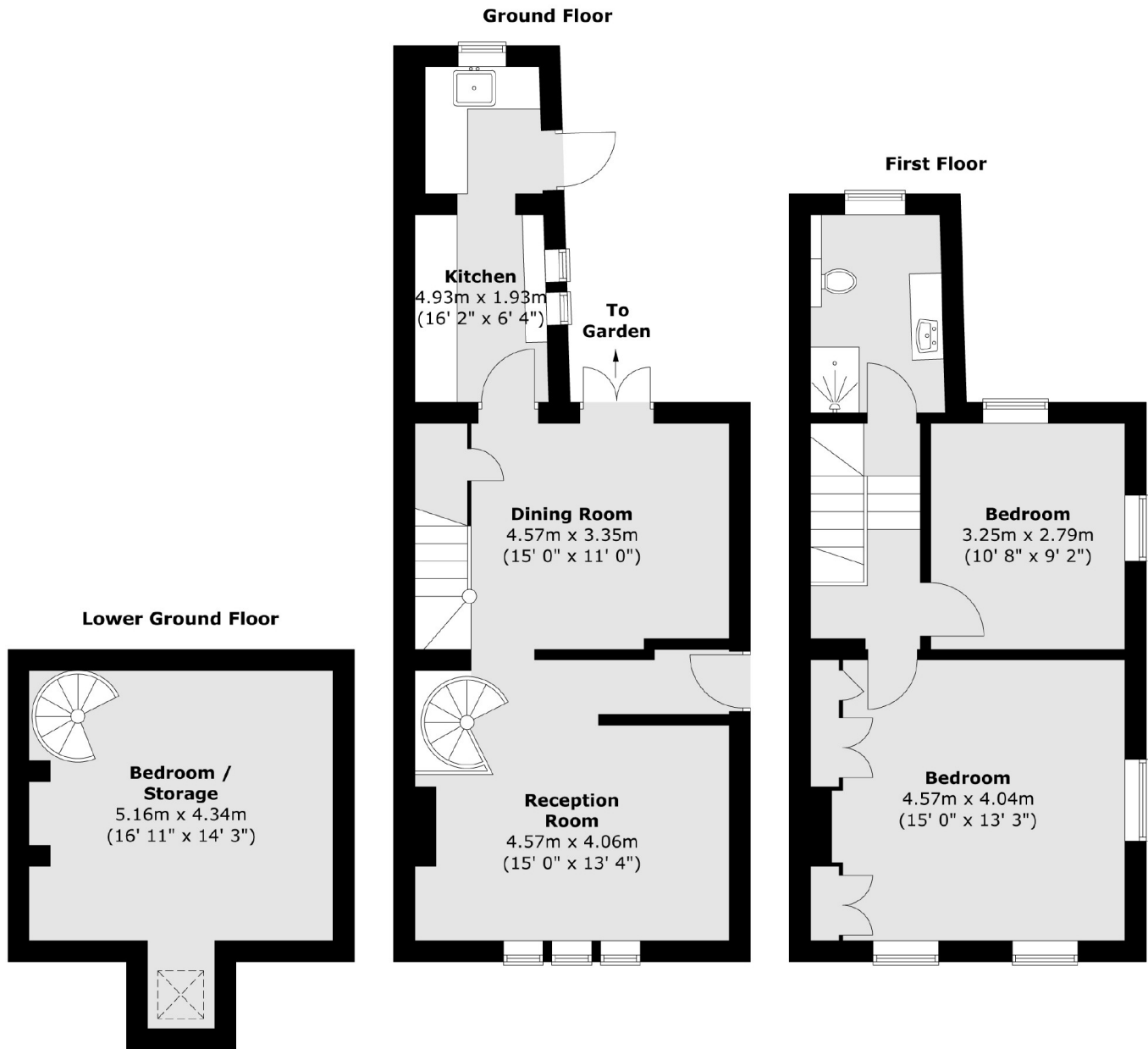
The ground floor includes a large living room with a spiral stair case leading down to a snug room with its own natural light, readily usable as a children's playroom or a third bedroom.

It also offers a separate dining room with patio doors, a very stylish bespoke kitchen including combi oven and induction hob, wooden floors and a utility room which leads out onto the garden. The property has been newly renovated to a modern finish.

The first floor accommodation consists of a large modern family bathroom, a master double bedroom with built in storage, triple aspect windows and a second double bedroom.



Albert Road, Richmond, TW10



Total area (approx.) : 101 sq. m (1087 sq. ft)