



## Forest Road, TW9

£870,000

A well presented Victorian split level apartment offering 1,091 sq ft of accommodation. Tube and rail services into London via the District Line, South West Trains and London Overground are available from Richmond station.

The location provides great access to the town centre of Richmond where a plethora of fine restaurants & eateries can be found amongst a vast array of shops, outstanding transport links, the River Thames and Richmond Park whilst also being conveniently situated beside the Royal Botanic Gardens, Kew and the Old Deer Park area.

### Features

- Three Double Bedrooms
- Spacious Reception Room
- Fitted Kitchen
- Family Bathroom
- First & Second Floors
- No Onward Chain



## Forest Road, TW9

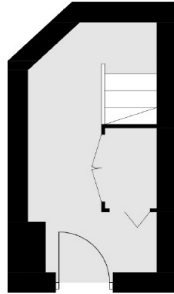
The property is accessed via the ground floor communal entrance hall with private door and staircase leading to the first floor landing.

The first floor consists of a landing, a spacious bay fronted reception room with a fireplace, a fitted kitchen, two bedrooms, and a modern family bathroom.

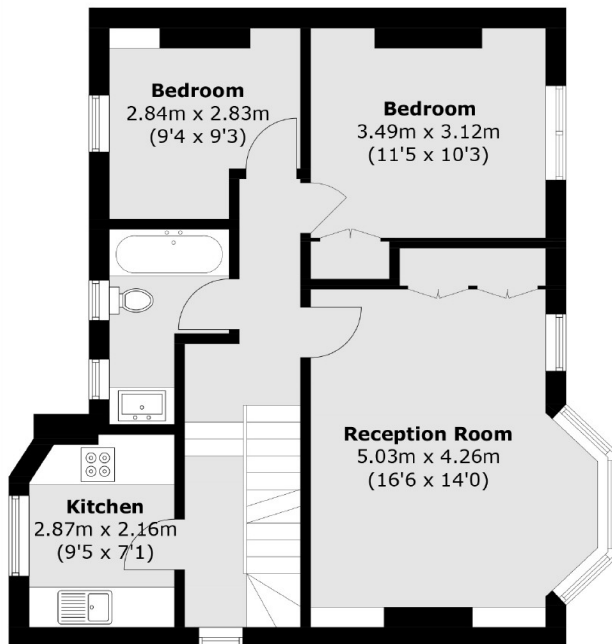
The second floor accommodation consists of a landing with plenty of storage space, the principle bedroom with built-in wardrobes and an ensuite bathroom.



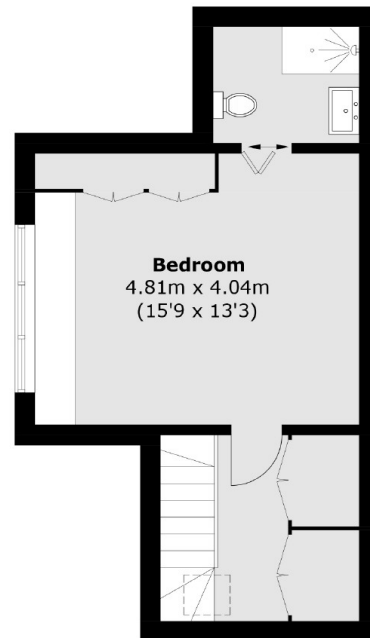
# Forest Road, Kew, TW9



**Ground Floor**



**First Floor**



**Second Floor**

Total area (approx.): 101.4 sq. m (1,091.5 sq. ft)