



Niton Road, TW9

£650,000

A beautifully presented ground floor, two bedroom garden maisonette offering approximately 715 sq ft of accommodation.

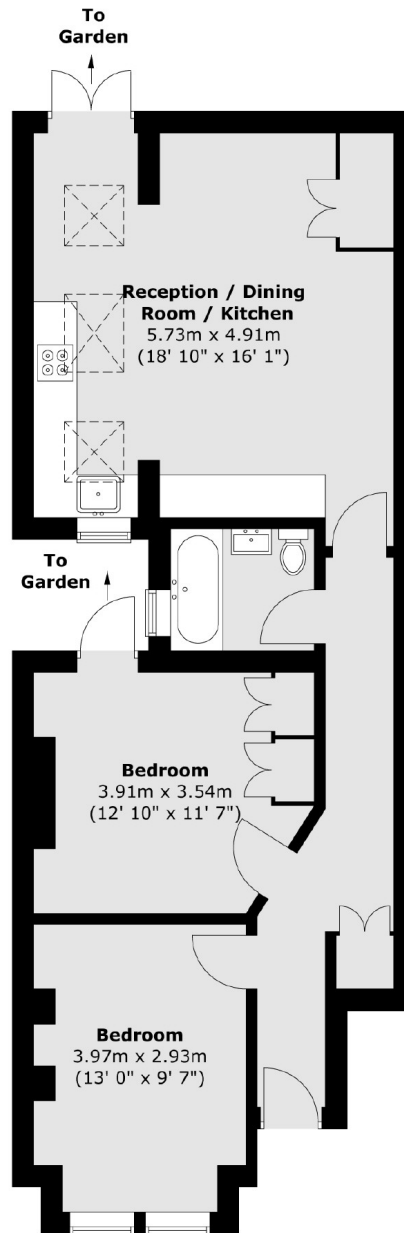
The property has been thoughtfully extended by the current owners and comprises a hallway, two double bedrooms, one with built in wardrobes, a modern family bathroom with underfloor heating, and a fully extended open plan reception/kitchen/dining room also with underfloor heating throughout and doors leading out to the immaculate private rear garden laid to paving and decking The property is offered to the market with newly extended long leasehold interest.

Niton Road is ideally located for Richmond Park and Royal Botanic Gardens Kew. The commuter is equally well catered for with Richmond, Kew Gardens and North Sheen stations close to hand with additional excellent bus services to Central London.

Features

- Maisonette
- Two Bedrooms
- Fully Extended
- Modern Interior
- Private Garden
- Long Lease

Niton Road, Kew, TW9



Total area (approx.) : 66.4 sq. m (715 sq. ft)