



## Melliss Avenue, TW9

### £740,000

A two double bedroom penthouse apartment which has an open plan kitchen/reception room with space for dining, two bathrooms, two parking spaces and residents gym, concierge and swimming pool. The property has a spacious balcony with views of the River Thames.

Kew Riverside development is located within close proximity to the River Thames and Kew Green and is within a quarter of a mile of Kew Village.

### Features

- Private Development
- Penthouse Apartment
- Secure Parking (Two Cars)
- Two Double Bedrooms
- Spacious Reception Room
- Two Bathrooms





## Melliss Avenue, TW9

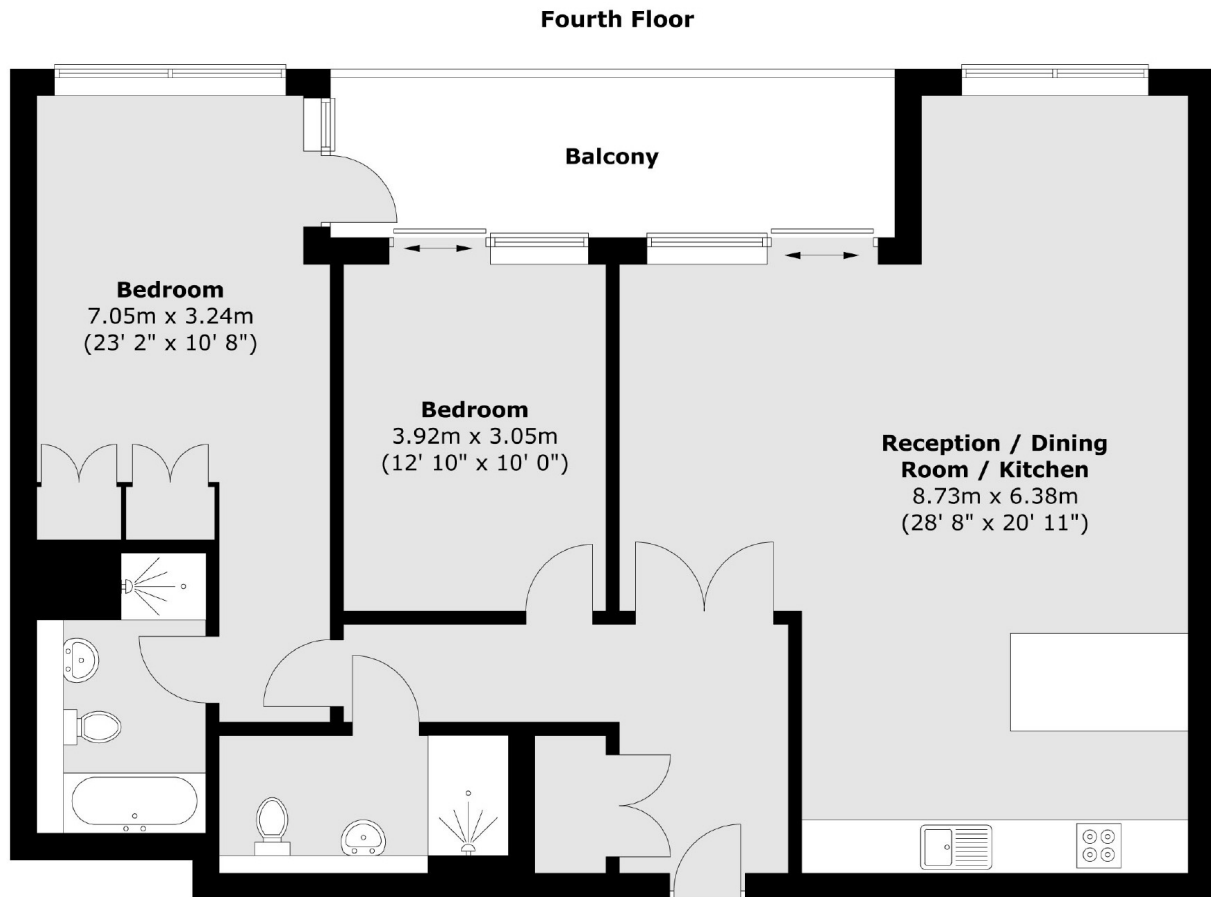
The property is entered via a well maintained communal entrance hall with secure entry phone system and provides lift and staircase access to the top floor communal landing with door into the property.

The accommodation consists of an entrance hall with storage cupboard, a spacious open plan reception room with sliding doors leading to a large private balcony, a beautifully designed, contemporary kitchen with integrated appliances, a master double bedroom with fitted wardrobes and ensuite and an additional double bedroom, as well as a modern family bathroom.

The property also benefits from two secure allocated underground parking spaces, 24/7 on-site concierge, under floor heating and access to residents on-site health and leisure club which includes a swimming pool and gym, as well as direct access to the Thames Path for riverside walks.



# Melliss Avenue, Kew, TW9



Total area (approx.) : 100 sq. m (1076 sq. ft)  
Total balcony area (approx.) : 11.4 sq. m (123 sq. ft)