



Lower Mortlake Road, TW9

£440,000

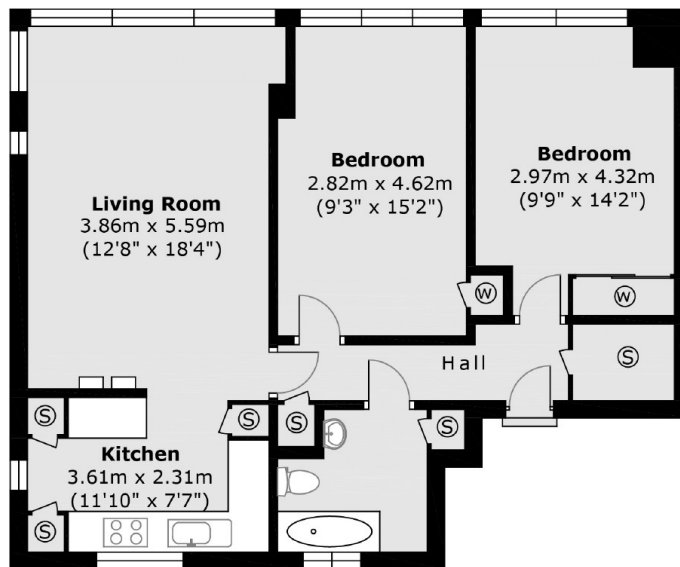
Benefitting from elevated panoramic views over the London skyline this apartment offers approximately 730 sq ft of accommodation. Tube and rail services into London via the District Line, South West Trains and London Overground are available from Richmond station. The sixth floor accommodation consists of an entrance hall with storage cupboards, a spacious reception room with an open plan fitted kitchen, two double bedrooms with fitted wardrobes and a modern family bathroom.

Lower Mortlake Road provides great access to the town centre of Richmond where a plethora of fine restaurants and eateries can be found amongst a vast array of shops, outstanding transport links, the River Thames, Richmond Green and Richmond Park. Whilst also being conveniently situated beside the Royal Botanic Gardens, Kew and the Old Deer Park area.

Features

- Purpose Built Apartment
- Two Double Bedrooms
- Spacious Reception Room
- Open Plan Fitted Kitchen
- No Forward Chain
- Residents Parking

Lower Mortlake Road, Richmond, TW9



Main area: Approx. 67.8 sq. meters (730.2 sq. feet)