



## Sheen Road, TW9

£450,000

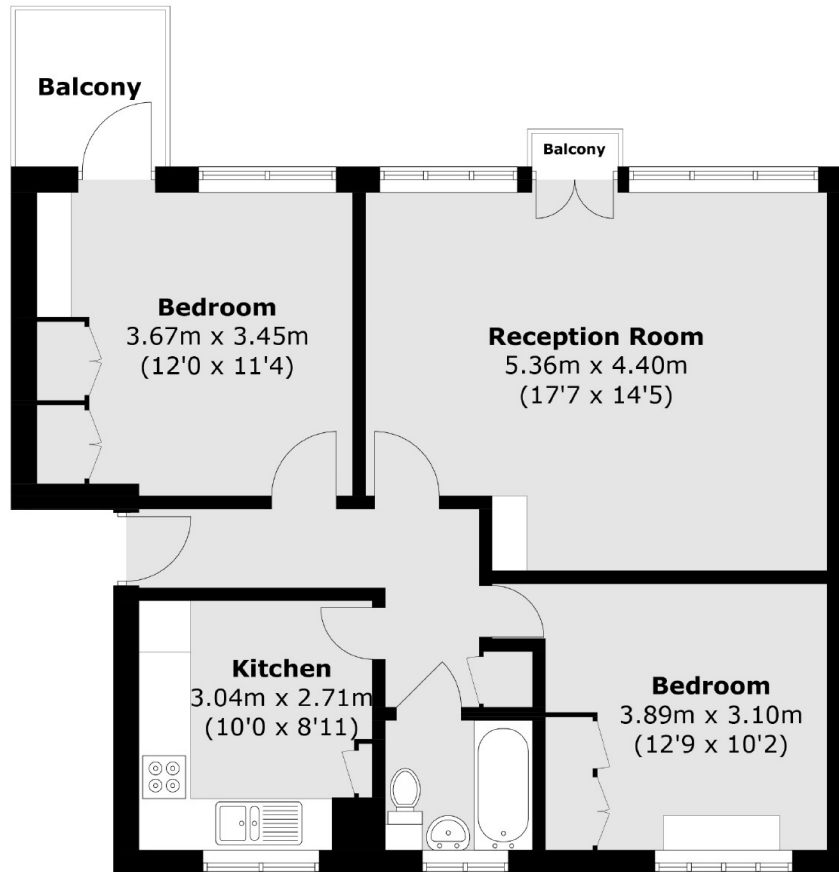
Situated on Sheen Road is this second floor purpose built apartment offering 706 sqft of accommodation.

Peldon Court, Sheen Road is ideally located for the amenities of Richmond town centre, with Richmond Park, Richmond Hill and Richmond Riverside all being close by. Richmond train station offers access to and from London by tube or rail via the District line, South West trains and the London Overground service.

### Features

- Two Double Bedrooms
- Spacious Reception Room
- Modern Bathroom
- Residents Parking
- Outstanding School Catchment
- No Forward Chain

# Sheen Road, Richmond, TW9



## Second Floor

Total area (approx.): 65.6 sq. m (706.1 sq. ft)

Balcony : 3.6 sq. m (38.7 sq. ft)