



Friars Lane, TW9

£895,000

Built on the site of Henry VII's old palace nestled between Richmond Green and the River Thames, Queensberry House is one of Richmond's most prestigious mansion developments and benefits from magnificent communal gardens which meander down to the river footpath.

Friars Lane is well located for the amenities of Richmond town centre with Richmond Riverside, Richmond Park and Richmond Hill all being close by. Richmond train station which offers access to London by tube or rail via the District line, South West trains and the London Overground service.

Features

- Three Bedrooms
- Double Aspect
- Beautiful Communal Gardens
- Just Off Richmond Green
- Thameside Location
- No Forward Chain



Friars Lane, TW9

This 887 sq ft second floor apartment consists of a large reception hall, a spacious reception room with views over the communal gardens, a fitted kitchen, a master double bedroom with fitted wardrobes, a second double bedroom and a third smaller bedroom, a bathroom and a separate wc.

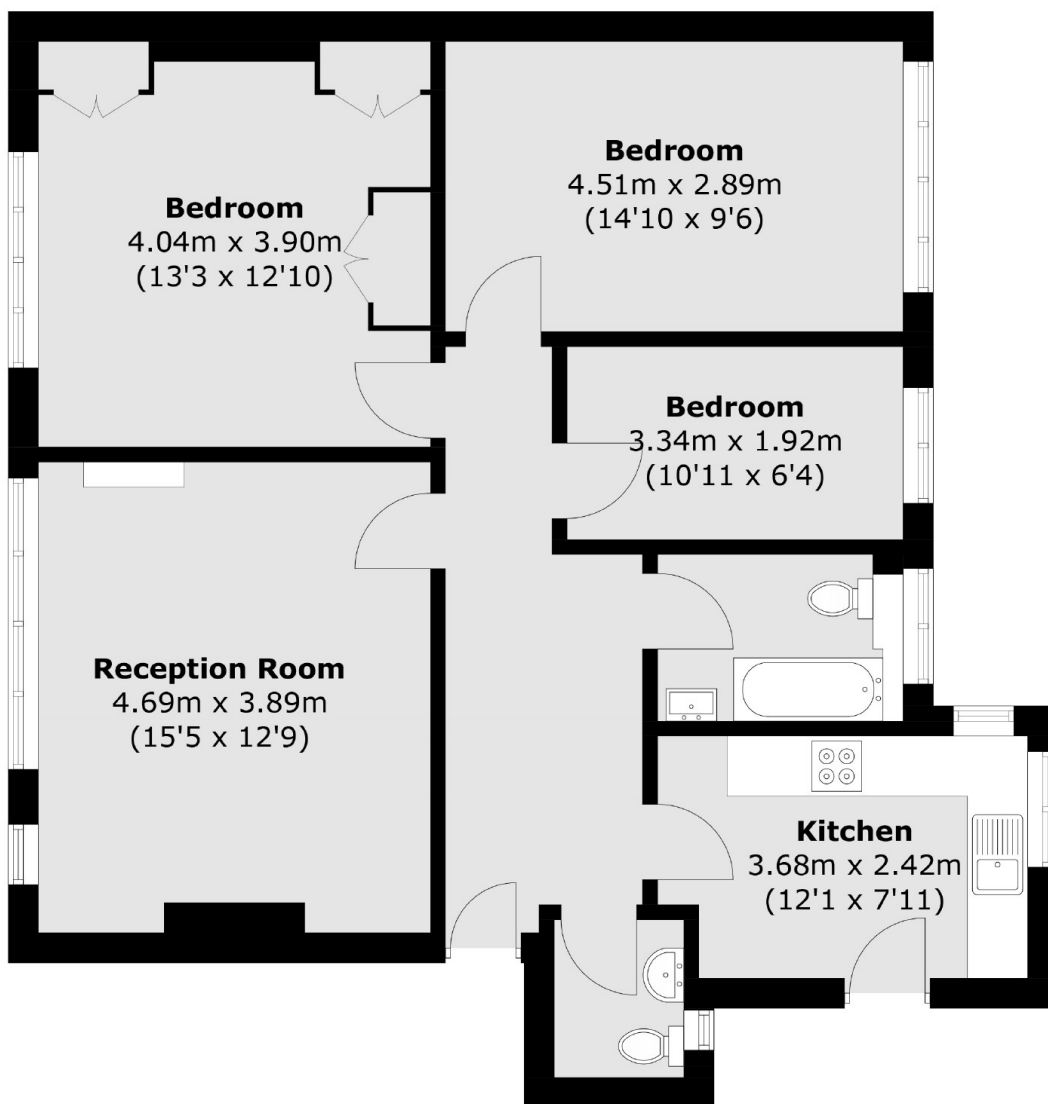
Outside there are expansive and beautifully maintained communal gardens with resident seating areas. Further benefits include: gated secure residents parking and an on site porter.

Centrally positioned the property is ideally located for Richmond's two theatres, two cinemas and numerous boutique shops, restaurants and coffee shops.

Richmond and the surrounding areas are home to a large number of first class schools and many are within walking distance of Queensberry House.



Friars Lane, Richmond, TW9



Total area (approx.): 82.4 sq. m (886.9 sq. ft)