



Mariner Gardens, TW10

£550,000

A well presented ground floor maisonette set back from the road facing a pretty communal green. The property is close to a number of excellent local schools including Greycourt, The German School, St Richards, Meadlands and Tiffin Boys & Girls.

Mariner Gardens is a popular residential road situated in green and leafy Ham, moments from Ham Lands, the River Thames, Teddington Lock and Ham Common. There is a choice of regular bus services into Richmond and Kingston where can be found train and tube services into Central London.

Features

- Two Double Bedrooms
- Spacious Reception Room
- Fitted Kitchen/Dining Room
- Family Bathroom
- Large Rear Garden
- Ground Floor Maisonette



Mariner Gardens, TW10

Offering approximately 800 sq ft of lateral space the property is entered by its own front door.

The ground floor accommodation consists of an entrance hall with four storage cupboards, a spacious reception room leading to a partially open-planned fitted kitchen/dining room with double glazed door leading to the rear garden, two double bedrooms with built-in wardrobes and a modern family bathroom.

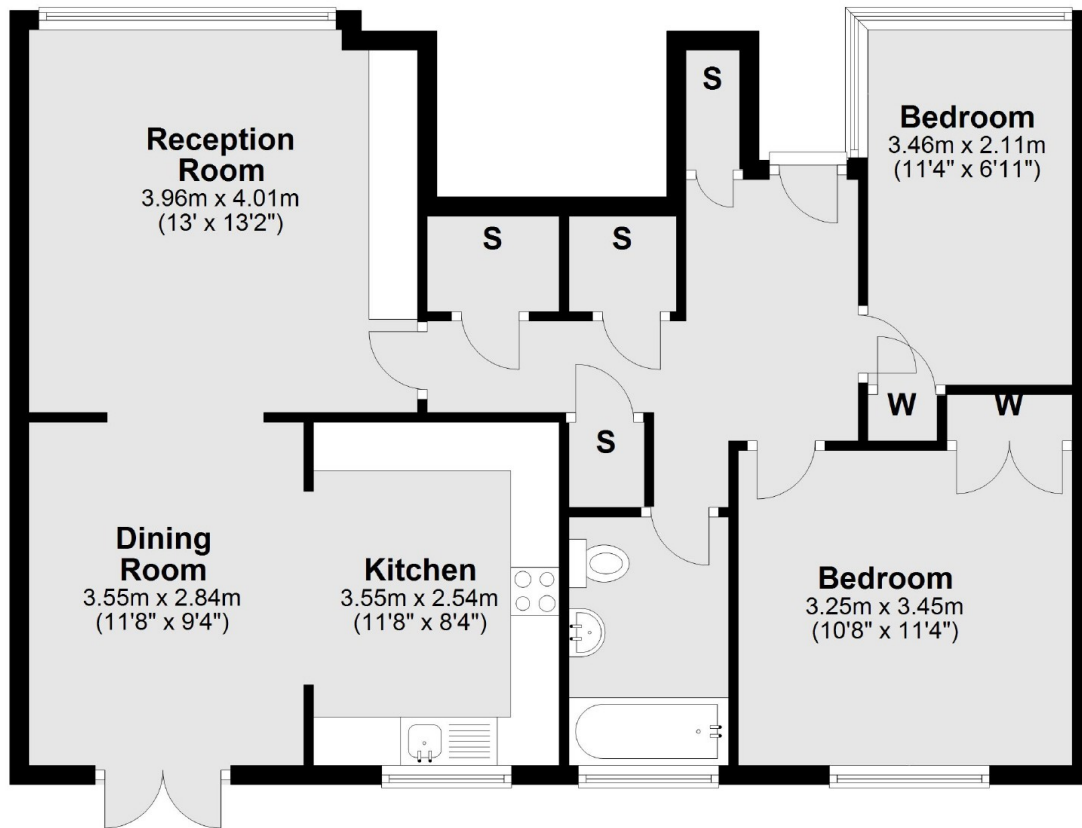
The property benefits from uPVC double glazing, gas central heating and from wooden parquet flooring. There is also the potential to extend at ground floor level subject to planning permission, licence and ownership.

Outside to the front is a small garden. To the rear is a large garden enclosed by wooden panel fencing which is mostly laid to lawn with flower and shrub displays, rest laid to patio, wooden storage shed.



Mariner Gardens, Ham, TW10

Ground Floor



Total area: approx. 74.3 sq. metres (799.5 sq. feet)