



Cardigan Road, TW10

£475,000

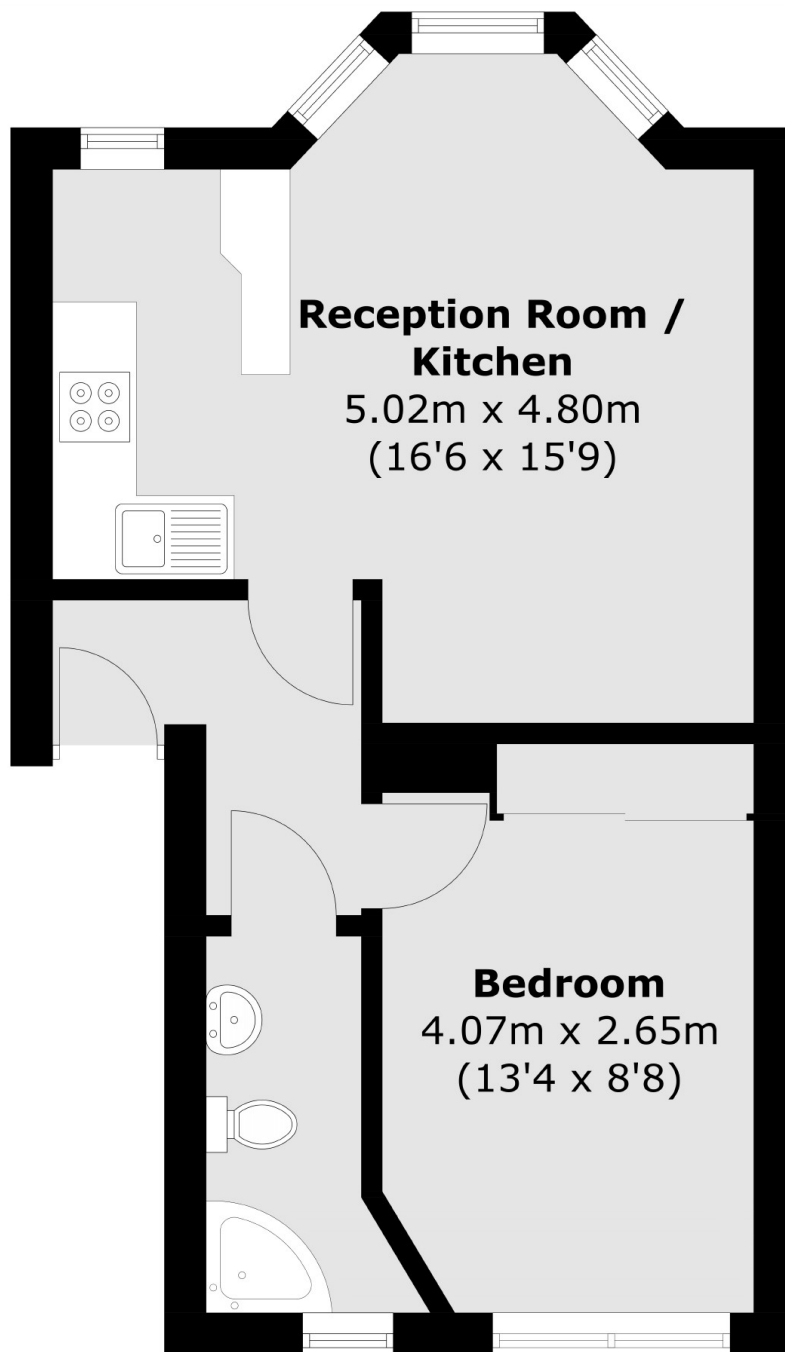
An opportunity to purchase a stunning Victorian apartment offering approximately 411 sq ft of stylish accommodation. The property is located on the first floor of a handsome period building with stunning communal areas and further benefits from a share of freehold and no onward chain.

Cardigan Road is perfectly located for the amenities of Richmond Village, with Richmond Park, Terrace Gardens, Richmond Riverside and Richmond town centre all being close by. Richmond train station offers access to and from London by tube or rail via the District line, South Western trains and the London Overground service

Features

- One Double Bedroom
- Modern Bathroom
- Open Plan Living
- No Onward Chain
- Share Of Freehold
- Richmond Hill

Cardigan Road, Richmond, TW10



Total area (approx.): 38.2 sq. m (411.2 sq. ft)