



## Petersham Road, TW10

£299,950

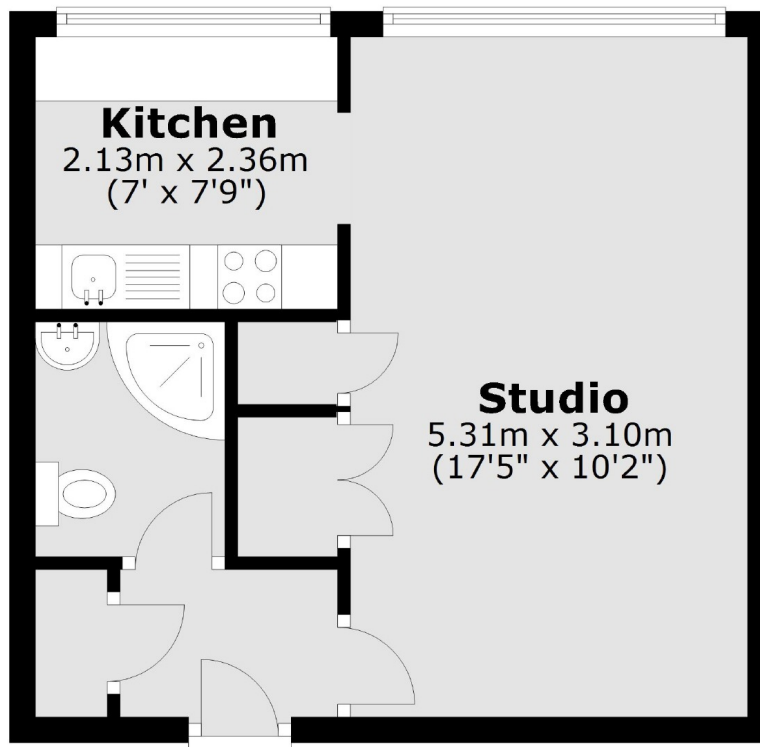
This bright studio flat is entered via a communal entrance hall with secure entry phone system. The property is offered with no forward chain and would suit a first time buyer, an investor or a buyer wanting a secure pied-a-terre.

Robins Court is a well maintained private sought after residential development situated at the bottom of Richmond Hill and just opposite the River Thames. Tube and rail services into Central London via the District Line, South West Trains and London Overground are also readily available from Richmond station.

### Features

- Purpose Built Studio Flat
- Separate Fitted Kitchen
- Bathroom
- Lift Access
- Allocated Parking
- No Onward Chain

# Petersham Road, Richmond, TW10



Total area: approx. 29.5 sq. metres (317.8 sq. feet)