



Petersham Road, TW10

£4,995 Per calendar month

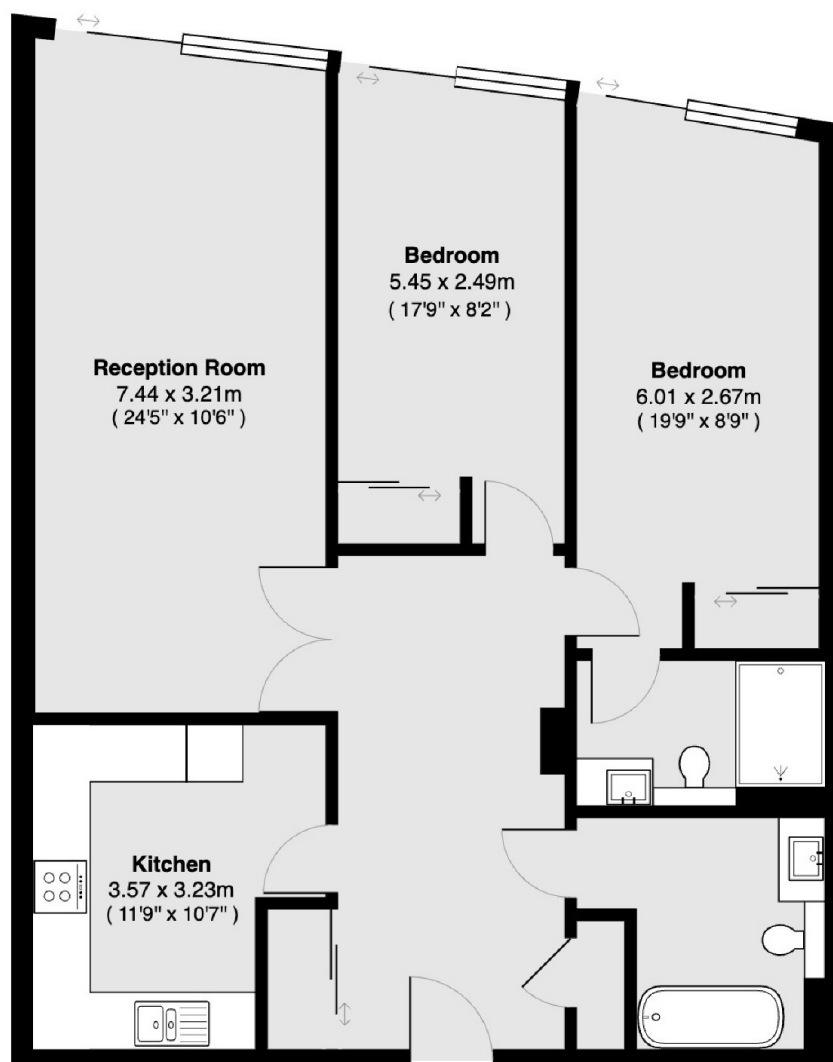
A perfectly positioned two double bedroom, two bathroom apartment with spectacular views across the River Thames. The spacious apartment has a large south facing private terrace and allocated underground parking.

Blade House is a very well-managed and sought after residential development situated at the bottom of Richmond Hill and just opposite the River Thames. Tube and rail services into Central London via the District Line, South West Trains and London Overground are also readily available from Richmond station and the A3 and M3 provide swift access to the South West.

Features

- Two Double Bedrooms
- River Facing
- Large Terrace
- Modern Kitchen
- Allocated Parking Space
- South-Facing

Petersham Road, Richmond, TW10



Total area 92.1 sq m (approx) (991 sq ft approx)