



Lower Mortlake Road, TW9

£675,000

A well presented Edwardian split level apartment offering 963 sq ft of accommodation. Tube and rail services into London via the District Line, South West Trains and London Overground are available from Richmond station.

The location provides great access to the town centre of Richmond where a plethora of fine restaurants & eateries can be found amongst a vast array of shops, outstanding transport links, the River Thames and Richmond Park whilst also being conveniently situated beside the Royal Botanic Gardens, Kew and the Old Deer Park area.

Features

- Three Double Bedrooms
- Spacious Reception Room
- Fitted Kitchen
- Family Bathroom
- First & Second Floors
- No Onward Chain



Lower Mortlake Road, TW9

The property is accessed via the ground floor communal entrance hall with private door and staircase leading to the first floor landing.

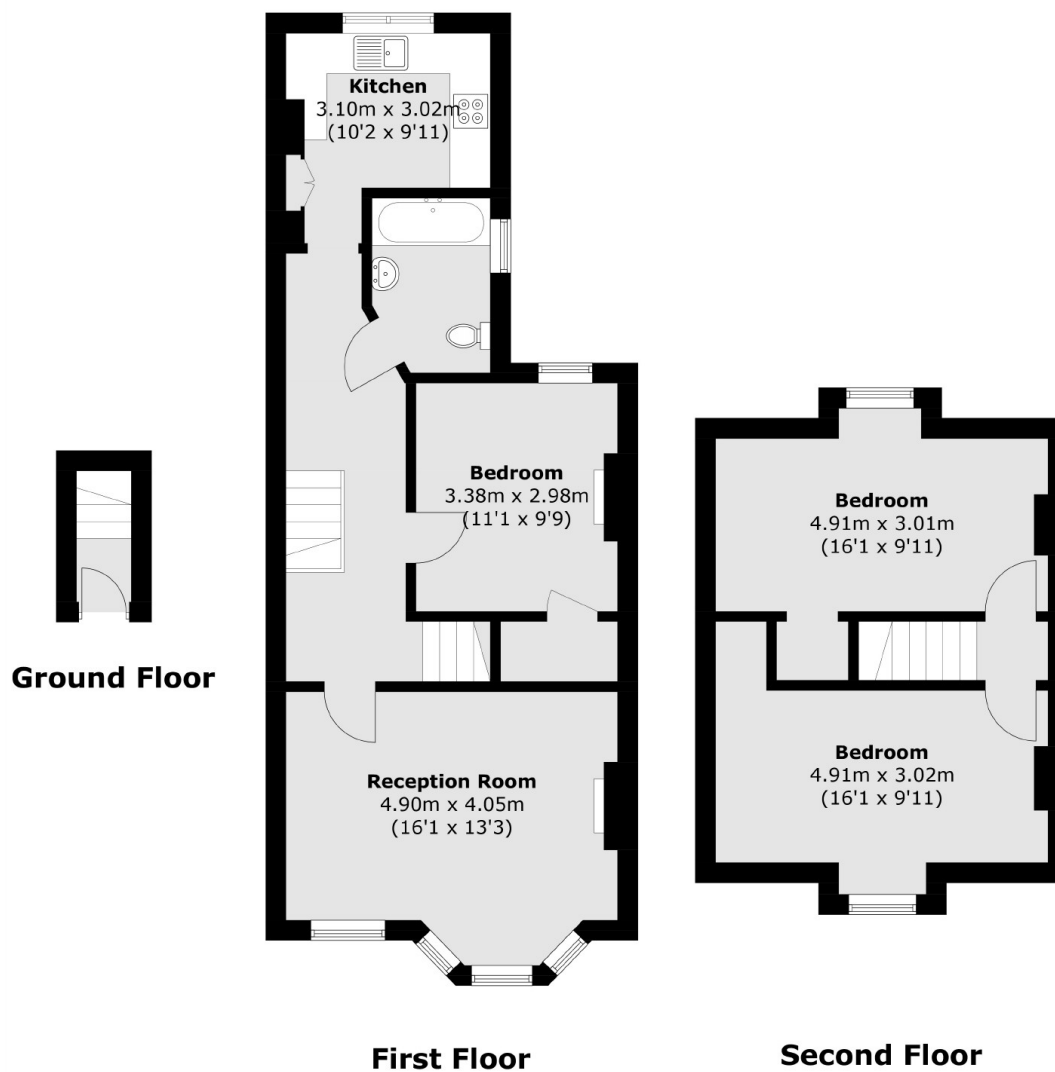
The first floor consists of a landing, a spacious bay fronted reception room with a fireplace, a fitted kitchen, a double bedroom, and a modern family bathroom.

The second floor accommodation consists of a landing and two further double bedrooms, both with built-in wardrobes.

The property further benefits from the full Freehold, double glazing throughout and is offered with no forward chain.



Lower Mortlake Road, Richmond, TW9



Total area (approx.): 89.5 sq. m (963.3 sq. ft)