



Lower Mortlake Road, TW9

£575,000

Vetro House is a landmark building designed and built by Quad, an award winning local architect in 2006. At approximately 658 sq ft, this bright and spacious contemporary styled apartment makes for an ideal first time purchase, pied-a-terre or rental investment.

Lower Mortlake Road provides great access to the town centre of Richmond where a plethora of fine restaurants and eateries can be found amongst a vast array of shops, outstanding transport links, the River Thames and Richmond Park whilst also being conveniently situated beside the Royal Botanic Gardens, Kew and the Old Deer Park area.

Features

- Two Bedrooms
- Spacious Reception Room
- Open-Plan Kitchen
- Two Modern Bathrooms
- Underground Parking Space
- Large Private Terrace



Lower Mortlake Road, TW9

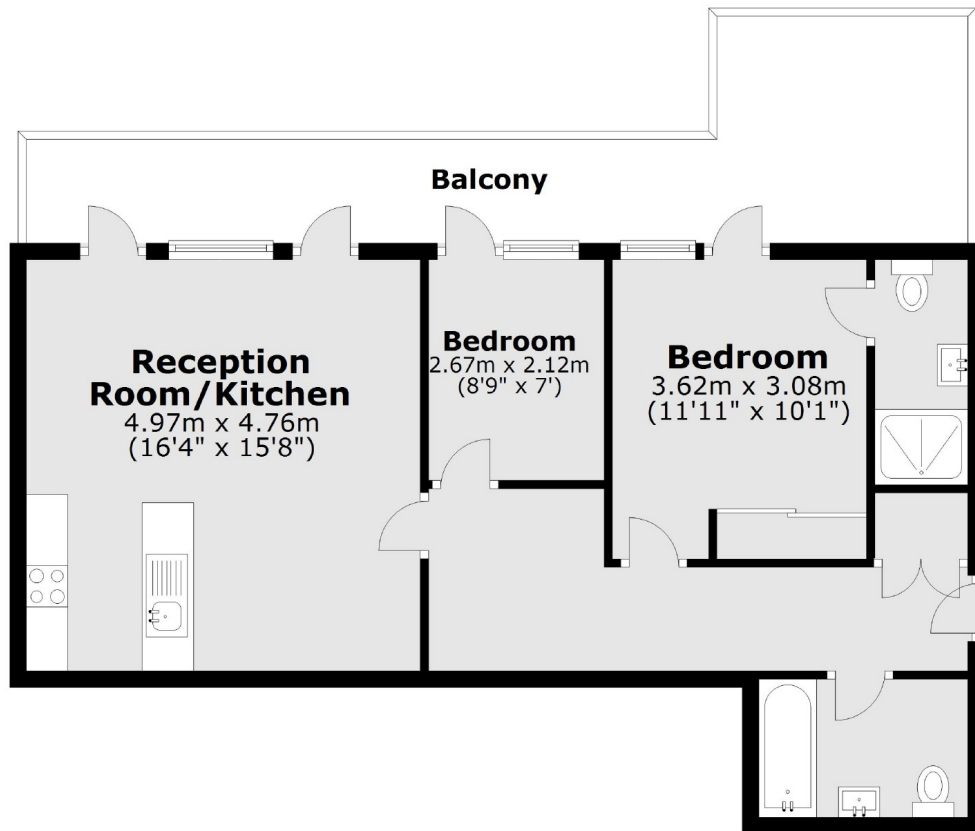
As you enter on the ground floor the accommodation consists of an entrance hall with storage cupboard leading down to the rest of the apartment.

There is a master double bedroom with built-in floor-to-ceiling wardrobes and a three piece ensuite, a further bedroom and a spacious open plan kitchen/reception room. All of these rooms have access onto the larger than average private terrace. In addition to the ensuite, there is another family bathroom.

The property also comes with a secure allocated underground parking space, which is accessed from Sheendale Road, and is offered no forward chain.



Lower Mortlake Road, Richmond, TW9



Main area: Approx. 61.2 sq. metres (658.2 sq. feet)
Plus balconies, approx. 20.0 sq. metres (215.0 sq. feet)