



## Courtlands, TW10

£2,895 Per calendar month

This spacious two bedroom, two bathroom, apartment located in the popular Courtlands development with it's close proximity to excellent schools. A stylish finish throughout and spacious living, a modern kitchen and a south-facing terrace with a gate leading onto communal gardens.

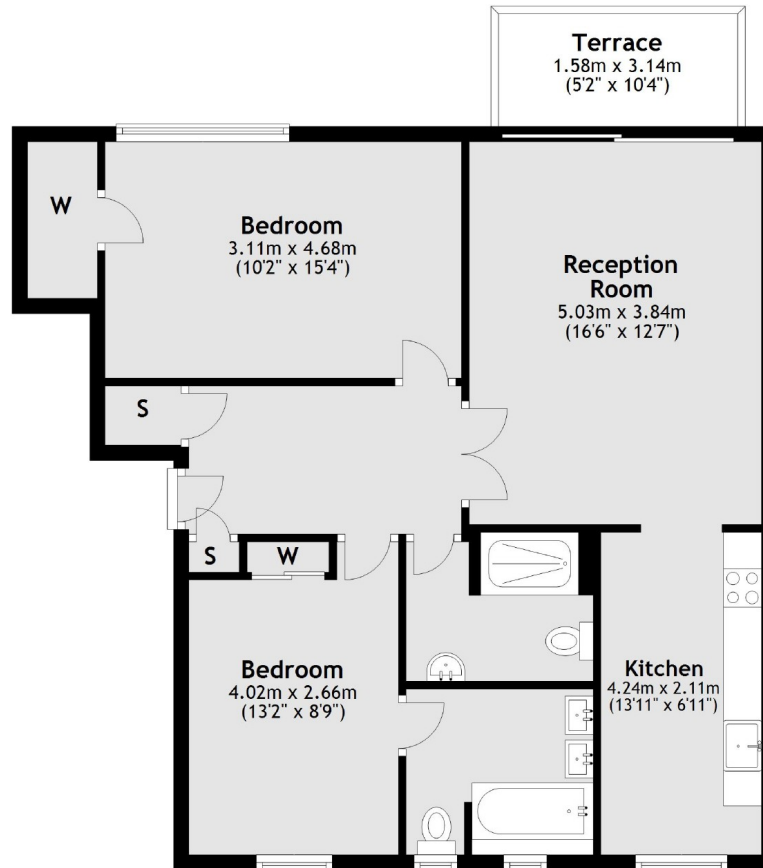
Courtlands is a prestigious development just moments from a gate to Richmond Park. The property is a short distance from North Sheen Station and Richmond town centre.

### Features

- Two Double Bedrooms
- Beautifully Presented
- Residents Parking
- South Facing Balcony
- Wood Floors
- Two Bathrooms

# Courtlands, Richmond, TW10

## Ground Floor



Total area: approx. 77.0 sq. metres (828.3 sq. feet)