



## Salisbury Road, TW9

£1,895 Per calendar month

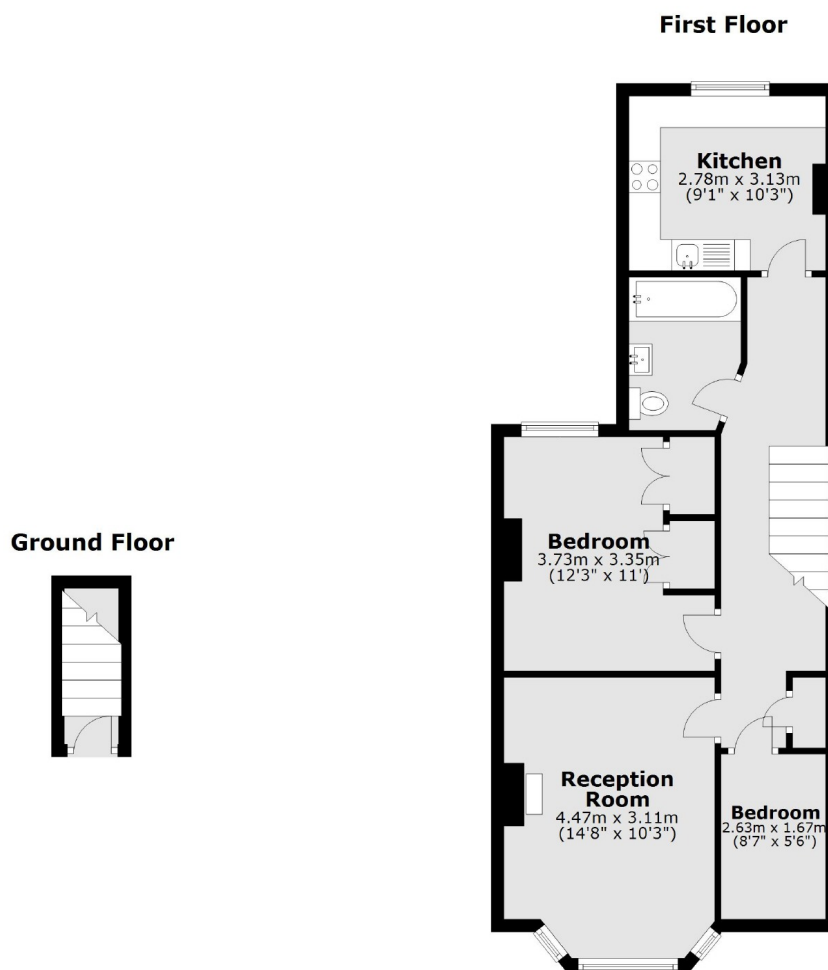
A very charming two bedroom first floor Victorian conversion, tons of character including fireplaces and wooden flooring. Lovely sized living room, modern kitchen and bathroom.

Salisbury Road, the heart of Richmond and less than a third of a mile away from Richmond train station means you are straight home after a long day at work to enjoy dinner and drinks in one of the many bars and restaurants or on the river!

### Features

- Two Bedrooms
- Cul-De-Sac
- Victorian Conversion
- Modern Bathroom
- Bright And Spacious
- Wooden Floors

# Salisbury Road, Richmond, TW9



Total area: approx. 59.8 sq. metres (643.9 sq. feet)