

Paradise Road, TW9

£1,995 Per calendar month

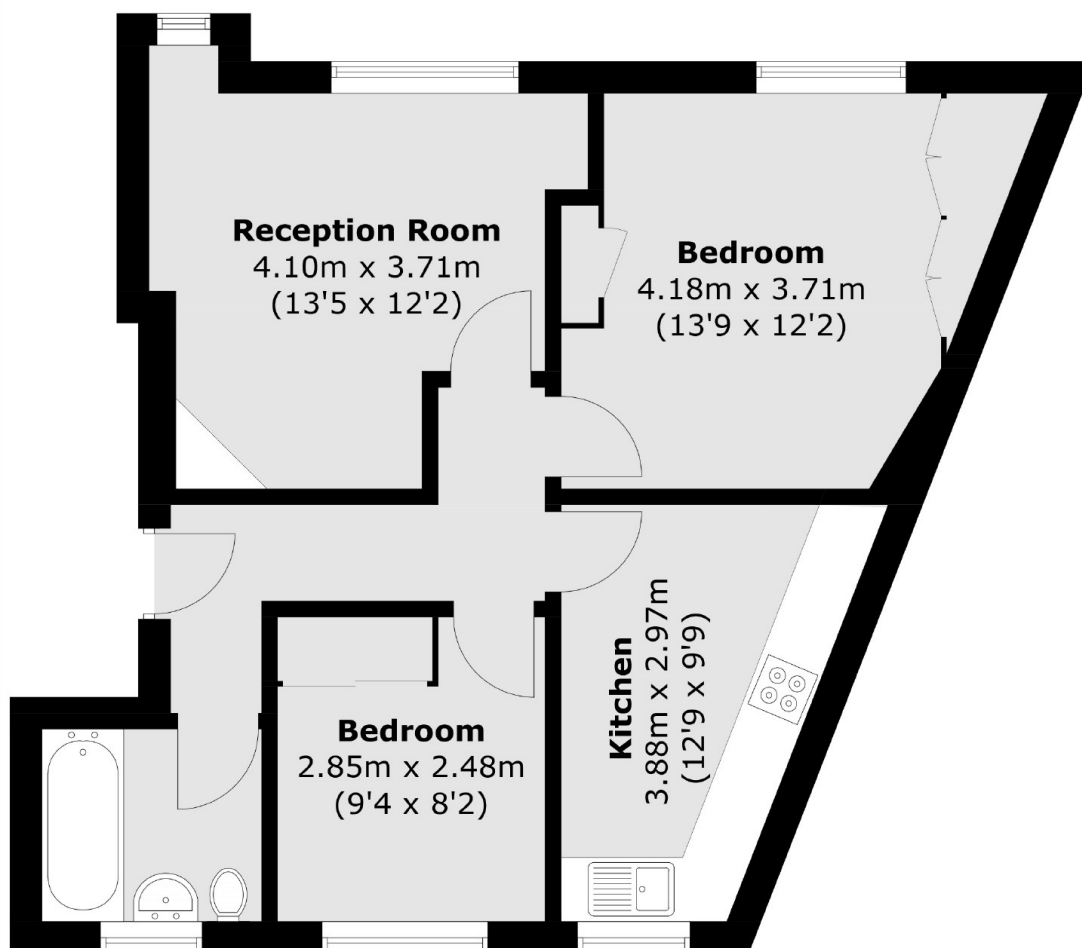
A spacious and well presented ground floor flat in this sought after mansion development in central Richmond. The flat offers two bedrooms, a modern bathroom, kitchen and a spacious living room with ample living and dining space.

Centrally situated Egerton Court is ideally located for Richmond's array of shopping and leisure amenities including Richmond Park and the River Thames. Richmond train station offers access to and from London by tube or rail via the District Line, South Western trains and the London Overground service.

Features

- Two Bedrooms
- Modern Finish
- Ground Floor
- Ample Storage
- Communal Courtyard
- Central Richmond Location

Paradise Road, Richmond, TW9



Total area (approx.): 54.8 sq. m (589.8 sq. ft)