



Lauderdale Drive, TW10

£7,000 Per calendar month

Dexters



Lauderdale Drive, TW10

This five bedroom detached family house offers, four bathrooms, plenty of living space for entertaining a family including a big conservatory and a south facing landscaped garden.

The house is arranged over three floors and provides a family with great living space on the ground floor including a double reception room leading to the conservatory and onto the large garden and stylish modern kitchen.

There are a further five bedrooms with stacks of fitted storage and four modern bathrooms - so much space for a large family or plenty of guests to come and stage.

The off street parking is a real bonus and the large garden fantastic for the children, including side access for their bikes.

Lauderdale Drive is perfectly located for a family looking for great schools, plenty of greenery on your doorstep including Richmond Park, The River Thames and Ham Fields.

Features

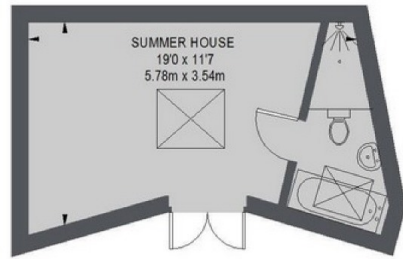
- Five Bedrooms
- Wooden Floors
- Driveway
- Conservatory
- Short Walk To German School
- Landscaped Garden



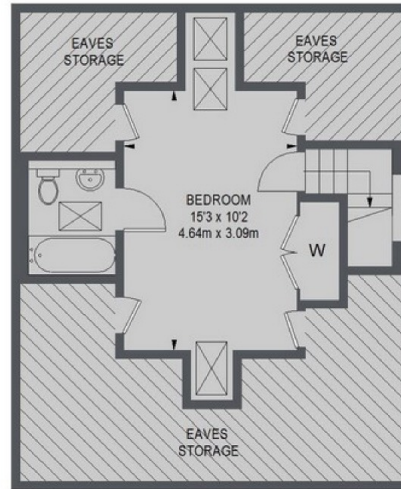




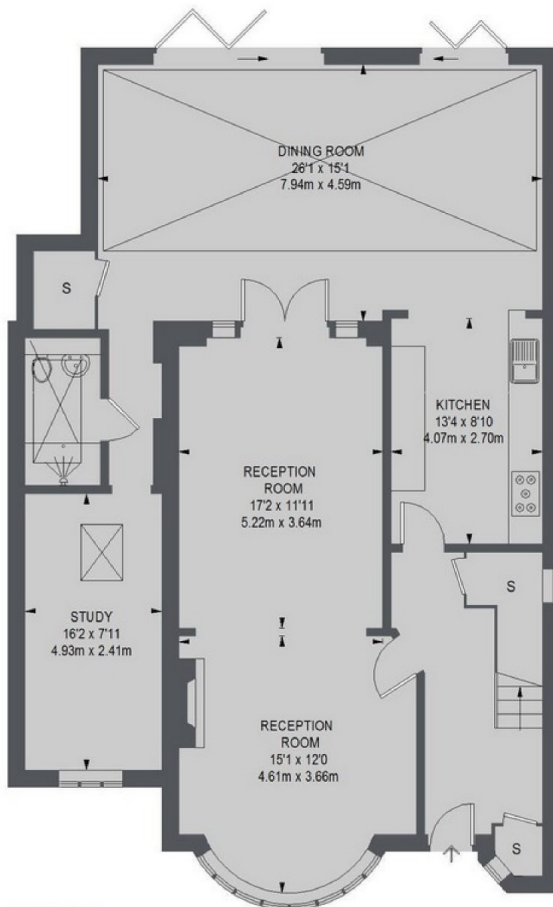
Lauderdale Drive, Richmond, TW10



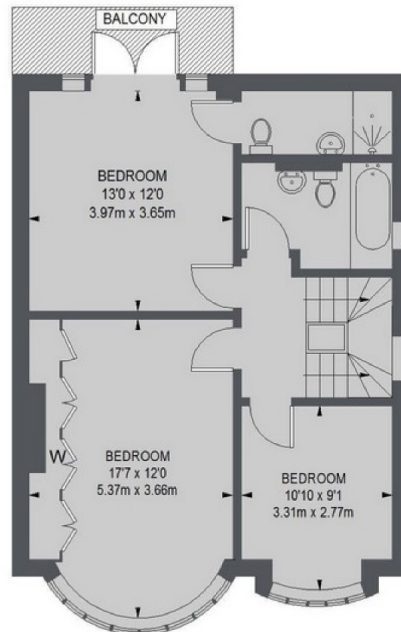
SUMMER HOUSE
(NOT SHOWN IN ACTUAL
LOCATION / ORIENTATION)



SECOND FLOOR



GROUND FLOOR



FIRST FLOOR

TOTAL APPROX. FLOOR AREA (EXCLUDING EAVES STORAGE)
2215 SQ. FT. (205.79 SQ. M.)
SUMMER HOUSE = 226 SQ. FT. (20.96 SQ. M.)