



Lower Mortlake Road, TW9

£485,000

Vetro House is a landmark building designed and built by Quad, an award winning local architect in 2006. At approximately 487 sq ft this bright and spacious contemporary styled garden apartment makes for an ideal first time purchase, pied-a-terre or rental investment.

Lower Mortlake Road provides great access to the town centre of Richmond where a plethora of fine restaurants and eateries can be found amongst a vast array of shops, outstanding transport links, the River Thames and Richmond Park whilst also being conveniently situated beside the Royal Botanic Gardens, Kew and the Old Deer Park area.

Features

- One Double Bedroom
- Spacious Reception Room
- Open-Plan Kitchen
- Modern Bathroom
- Private Garden
- Underground Parking Space



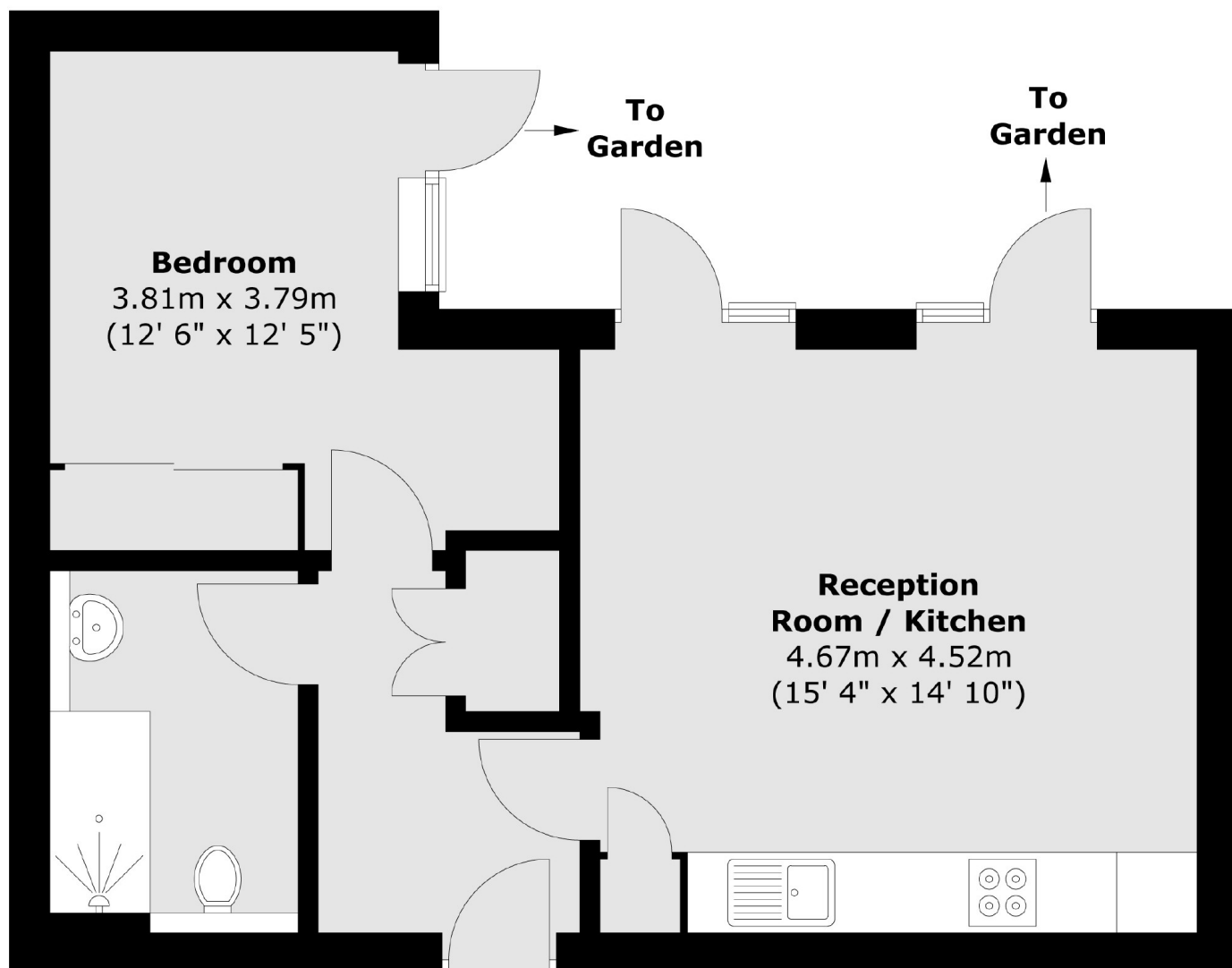
Lower Mortlake Road, TW9

The property comprises an entrance hall with storage cupboard, a very generous open plan reception room with modern fitted kitchen, doors leading to the garden, wooden floors throughout and high ceilings, a large double bedroom with built in wardrobes, an additional area for a home office and door leading out to the garden, and a modern shower room.

Outside to the rear is a private south facing walled garden which is laid to patio and decking. A secure allocated underground parking space is accessed from Sheendale Road.



Lower Mortlake Road, Richmond, TW9



Total area (approx.) : 45.2 sq. m (487 sq. ft)