



## Howson Terrace, TW10

£1,400 Per calendar month

This studio flat is entered via a communal entrance hall with secure entry phone system and provides access to the ground floor communal landing with door into the property.

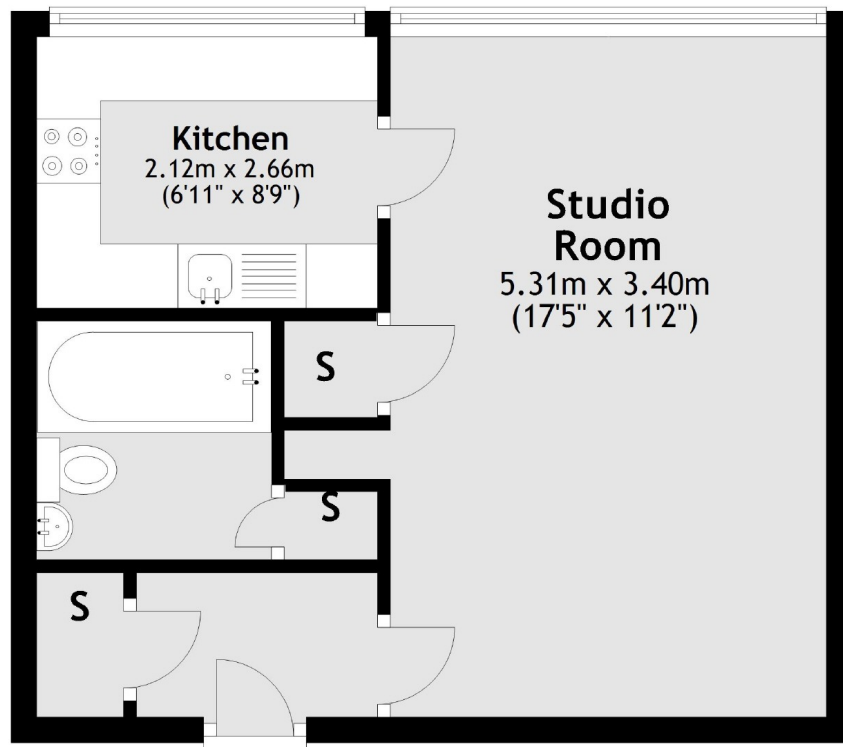
Bromwich House is a well maintained private sought after residential development situated on the slopes of Richmond Hill between the River Thames and Terrace Gardens. Tube and rail services into Central London via the District Line, South West Trains and London Overground are also readily available from Richmond station.

### Features

- Purpose Built Flat
- Studio Room
- Separate Fitted Kitchen
- Bathroom
- Ground Floor
- Allocated Parking

# Howson Terrace, Richmond, TW10

## Ground Floor



Total area: approx. 32.7 sq. metres (352.1 sq. feet)