



## Salisbury Road, TW9

£4,000 Per calendar month

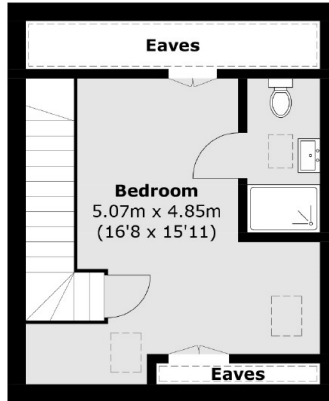
This four bedroom bedroom family house will be perfect for the growing family. With a large living room, well appointed kitchen, high ceilings and a south facing garden. Early viewings are highly recommended.

Salisbury Road is close to Richmond town centre and many popular local schools. It is ideal and a short walk to Richmond Station and a wide choice of cafes and restaurants nearby.

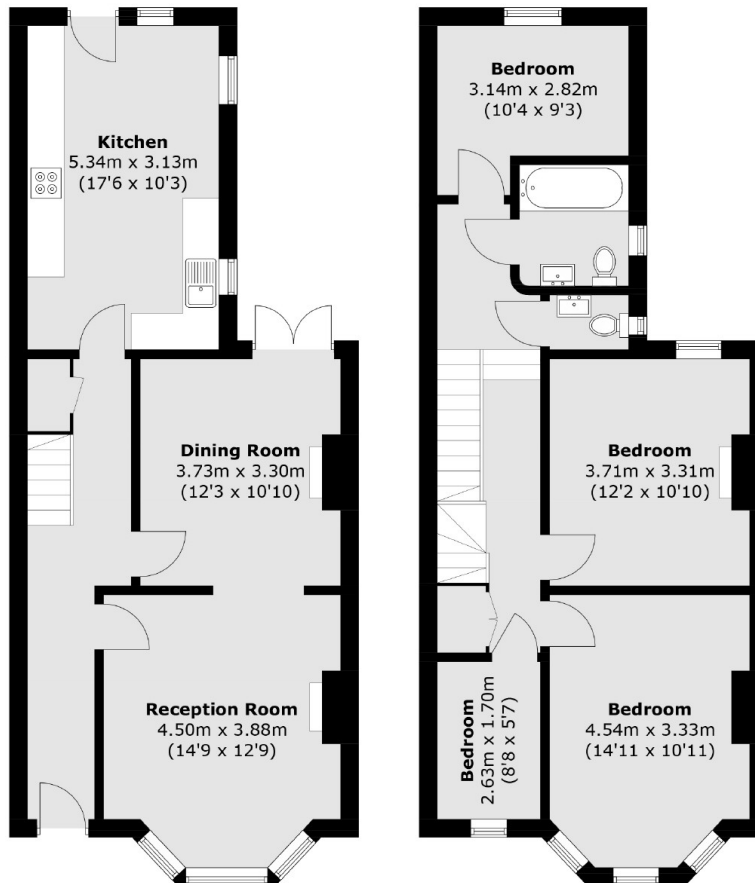
### Features

- Five Bedrooms
- High Ceilings
- Newly Refurbished
- Two Bathrooms
- Garden
- Bright Living Area

# Salisbury Road, Richmond, TW9



**Second Floor**



**Ground Floor**

**First Floor**

Total area (approx.): 139.8 sq. m (1,504.8 sq. ft)  
(Excluding Eaves)