



## Waterloo Place, TW9

£695,000

A rare opportunity to acquire this Victorian chocolate-box cottage which oozes charm, character and kerb appeal. Located within the heart of Richmond the property is tucked away within one of Richmond's 'secret' pedestrian through streets.

Waterloo Place is positioned just off Princes Street and The Quadrant and perfectly located for Richmond's extensive leisure, shopping and travel amenities including boutique and high street shops, restaurants and independent coffee shops.

### Features

- Freehold
- Two Double Bedrooms
- Double Reception Room
- Modern Fitted Kitchen
- Front And Rear Gardens
- No Onward Chain





## Waterloo Place, TW9

The ground floor accommodation consists of an entrance, a double reception room with distinct living and dining areas and doors leading out to the private rear garden, a modern fitted kitchen and a modern three piece bathroom.

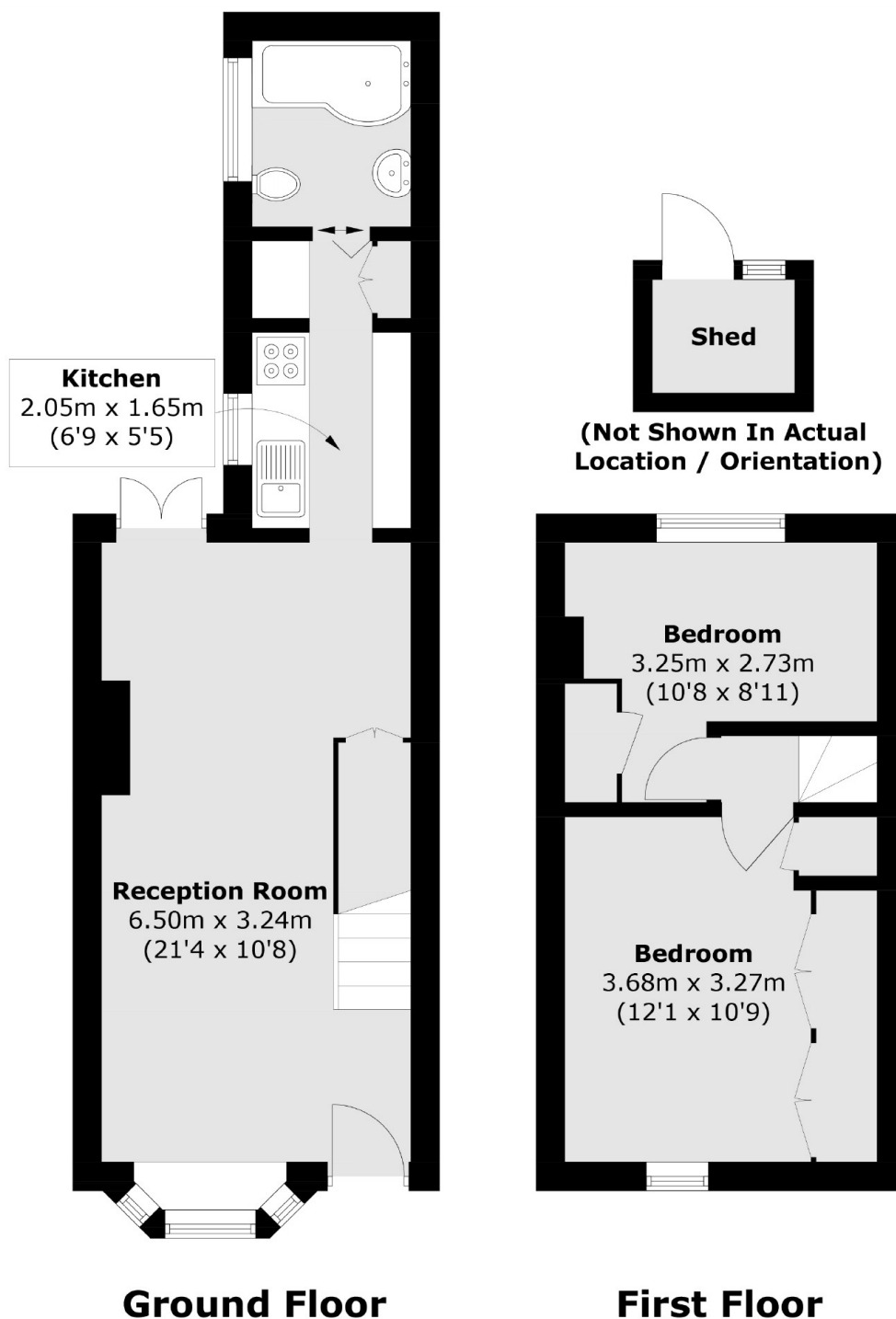
The first floor accommodation consists of two double bedrooms, both with built in storage. Outside to the front is a walled private garden with front door into the property. To the rear is a private garden laid to lawn and paving and also provides rear access.

The property is ideally located for Richmond Park, Richmond Green and the River Thames. Whilst tube and rail services into Central London via the District Line, South West Trains and London Overground are readily available from Richmond station.





# Waterloo Place, Richmond, TW9



Total area (approx.): 52.0 sq. m (559.7 sq. ft)  
Shed : 1.8 sq. m (19.4 sq. ft)