



Montague Road, TW10

£1,500,000

An exquisitely presented 1,299 sq ft split level private garden apartment occupying the ground and lower ground floors of a handsome period building. Situated within Richmond's most premier and sought after road.

Montague Road is centrally located on Richmond Hill with Richmond town centre, Richmond Park and Richmond Riverside all being close by. Richmond train station offers access to and from London by tube or rail. Via the District line, South West trains and the London Overground service.

Features

- Two Double Bedrooms
- Stylish Reception Room
- Superb Kitchen/Dining Room
- Two Ensuite Shower Rooms
- Utility/Cloakroom
- Private Rear Garden



Montague Road, TW10

The property is entered via its own private entrance leading to the ground floor accommodation which consists of a grand entrance hall with staircase leading down to the lower ground floor, a bay fronted master double bedroom overlooking the rear garden with fitted wardrobes and a modern and contemporary styled ensuite shower room and a second bay fronted double bedroom with fitted wardrobe and a modern and contemporary styled ensuite shower room.

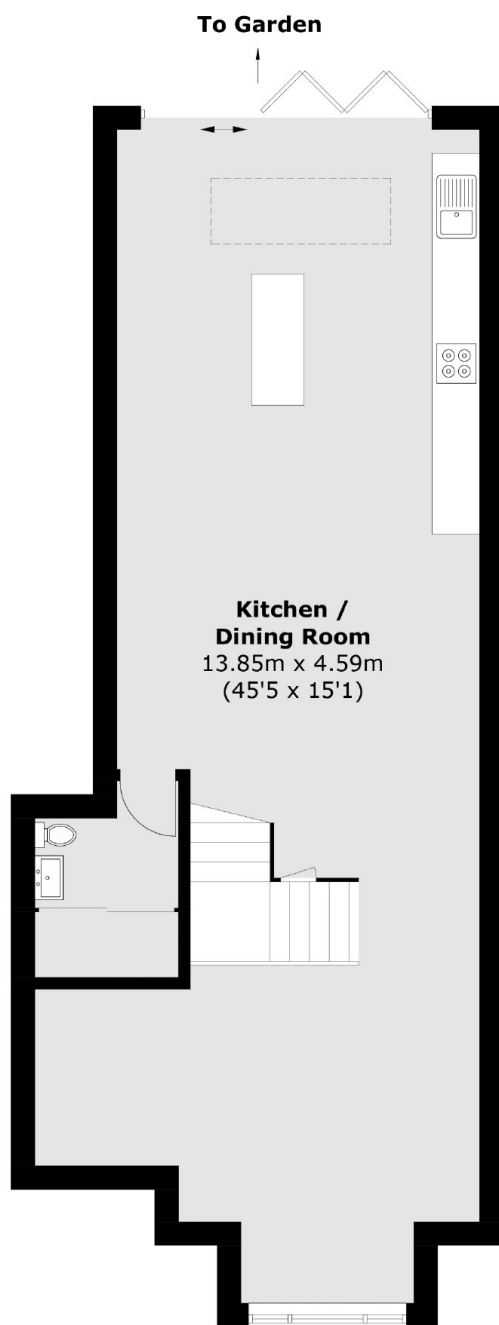
The lower ground floor consists of spectacular open plan space incorporating distinct living and dining areas, a bespoke fully fitted open plan kitchen with bi-fold doors leading to the private rear garden and a separate utility/cloakroom.

Outside to rear is a private garden which consists of a patio with steps up to a lawned garden with flower and shrub displays. A courtesy path provides side access leading to the front. The property benefits from high ceilings throughout and underfloor heating.

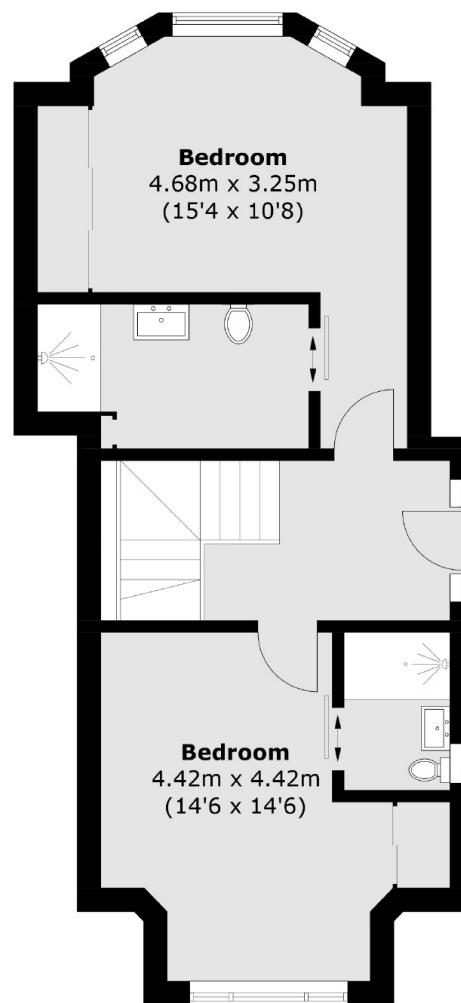
The Vineyard school, Ofsted rated outstanding, is close by along with many areas of natural greenery making it a perfect location for families and professionals alike.



Montague Road, Richmond, TW10



Lower Ground Floor



Ground Floor

Total area (approx.): 120.7 sq. m (1299.1 sq. ft)