



Windsor Road, TW9

£370,000

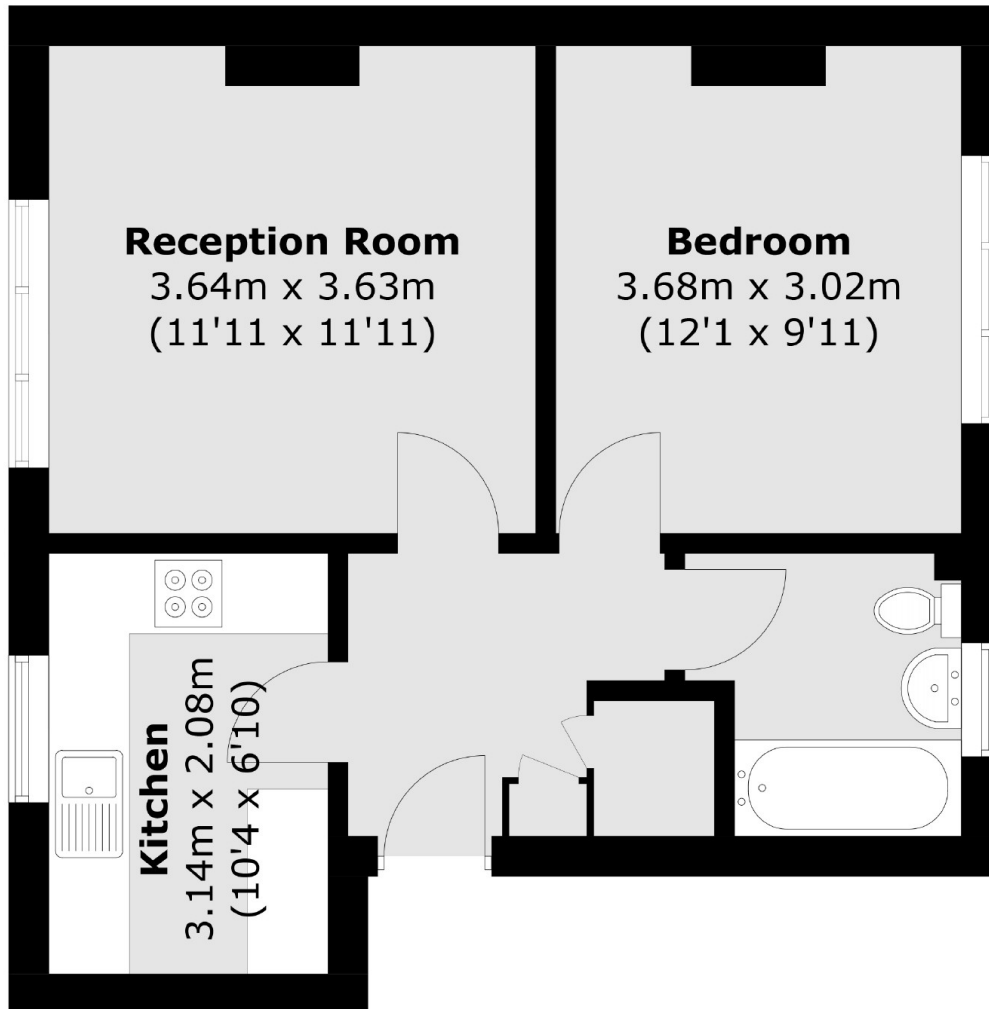
This one bedroom garden flat is ideally located for the charming amenities of Kew Village. The property offers approx. 456 sqft of accommodation, an enviable garden for this location, and no onward chain.

Windsor Road is ideally located for Richmond Park and Royal Botanic Gardens Kew. The commuter is equally well catered for with Richmond, Kew Gardens and North Sheen stations close to hand with additional excellent bus services to Central London.

Features

- One Double Bedroom
- First Floor
- Separate Kitchen
- Garden
- Kew Village
- No Onward Chain

Windsor Road, Kew, TW9



Total area (approx.): 42.4 sq. m (456.4 sq. ft)