



Sheen Road, TW9

£2,150 Per calendar month

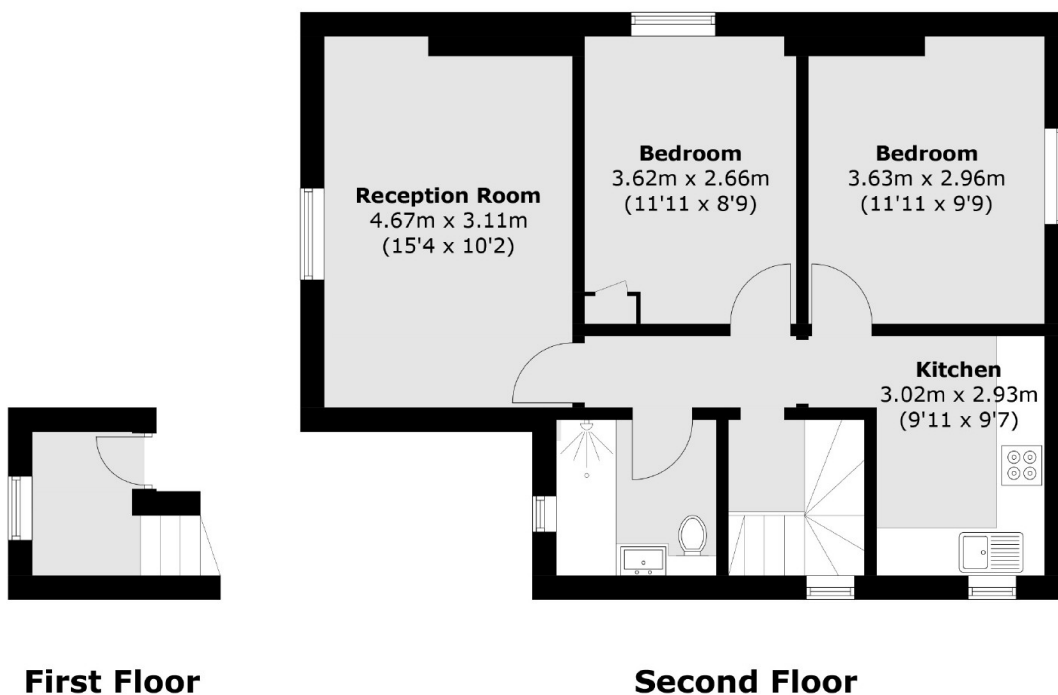
A beautiful top floor two bedroom apartment conveniently located for Richmond Town centre and Richmond train station and offers a modern kitchen, reception room and a spacious bathroom.

Sheen road is located close to North Sheen and Richmond Station (District line) and provide excellent access into London. The property is also close to a number of great schools, such as Marshgate Primary.

Features

- Two Bedrooms
- Top Floor
- Modern Kitchen
- Natural Light
- Richmond Station
- Great Schools

Sheen Road, Richmond, TW9



Total area (approx.): 57.8 sq. m (622.2 sq. ft)