



Sheridan Road, TW10

£3,500 Per calendar month

This terraced family home with 1,400 sq ft over four floors and will be perfect for a family. The property is ideally positioned for a number of excellent local schools including Greycourt, The German School and Meadlands.

Sheridan Road is a desirable and popular residential cul-de-sac positioned close to Ham, the River Thames, Teddington Lock and Ham Common. Also in the catchment area for popular schools in the area.

Features

- Four Double Bedrooms
- Spacious Reception Room
- Large Kitchen/Dining Room
- Modern Family Bathroom
- Ensuite WC & Cloakroom
- South Facing Garden



Sheridan Road, TW10

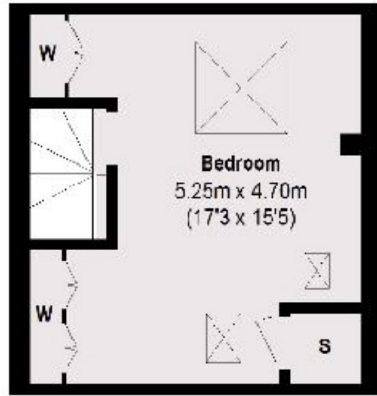
The ground floor of this terraced house offers a modern kitchen/dining room with sliding doors leading to the rear garden with a patio and a large shed, a cloakroom and ample storage.

The first floor consists of a bright reception room, a double bedroom with fitted wardrobe and ensuite wc. The second floor offers two double bedrooms and a modern family bathroom. A master bedroom with fitted wardrobes on the third floor.

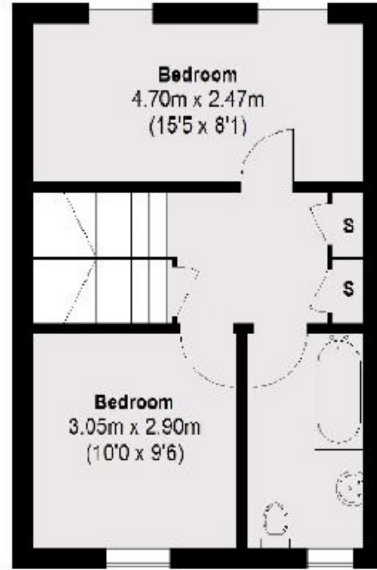
The property further benefits from off street parking for one vehicle, direct access to an integral bicycle/storage room. A south facing garden and a large shed, perfect to be used for additional storage or as a home gym.



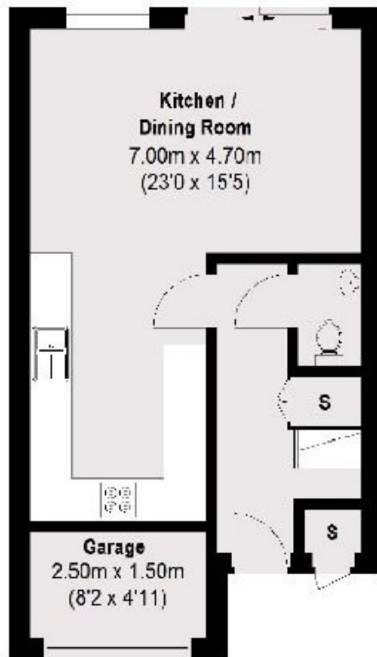
Sheridan Road, Ham, TW10



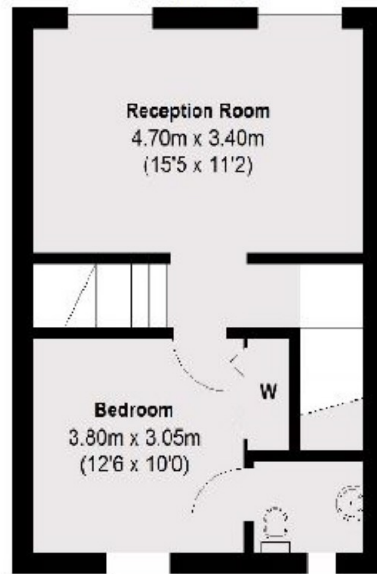
Third Floor



Second Floor



Ground Floor



First Floor

Total area (approx.): 130.09 sq. m (1400 sq. ft.)
Garage : 3.96 sq. m (43 sq. ft.)