



The Vineyard, TW10

£3,500 Per calendar month

A well-presented three bedroom Victorian family home situated on the slopes on Richmond Hill. The property offers wooden flooring throughout, and an open plan modern kitchen / reception room with direct access to a patio garden.

The Vineyard is ideally situated on Richmond Hill and close to the town centre with all it's many shops, bars and restaurants. Richmond Park is within a ten minutes walk and Richmond station is just 0.23 miles away.

Features

- Three Bedrooms
- Great Location
- Wood Floors
- Bright Reception
- Two Bathrooms
- Patio Garden



The Vineyard, TW10

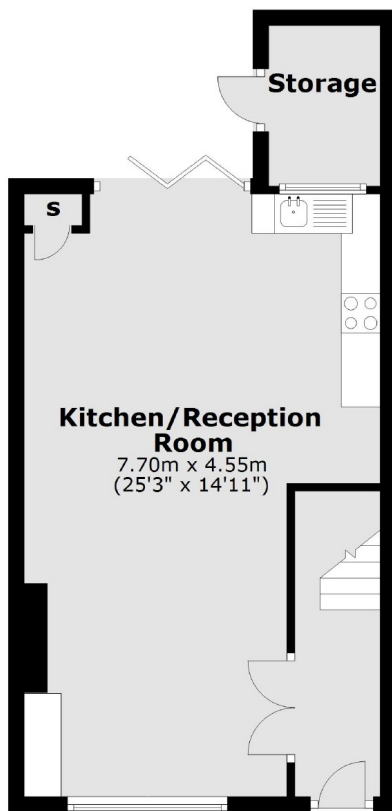
This three bedroom property offers an entrance hallway, open plan kitchen / reception room with wooden floors throughout and bi-folding doors leading out onto the patio garden, which has direct access to storage space.

The first floor offers two double bedrooms with built-in wardrobes and a shower room. To the second floor is the Principle bedroom with ample storage space and ensuite bathroom.

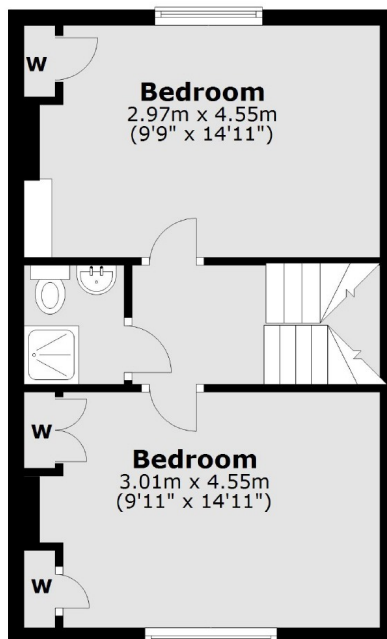


The Vineyard, Richmond, TW10

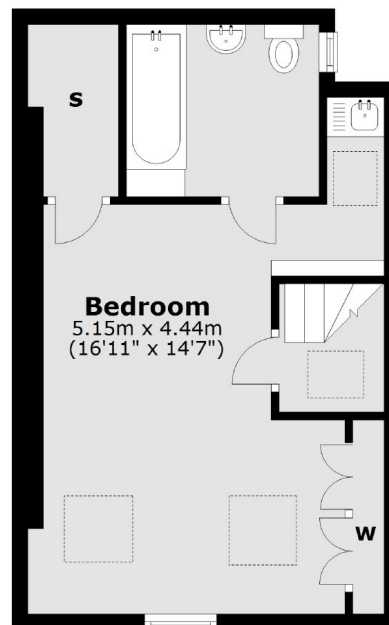
Ground Floor



First Floor



Second Floor



Total area: approx. 106.6 sq. metres (1147.9 sq. feet)