



Halford Road, TW10

£750,000

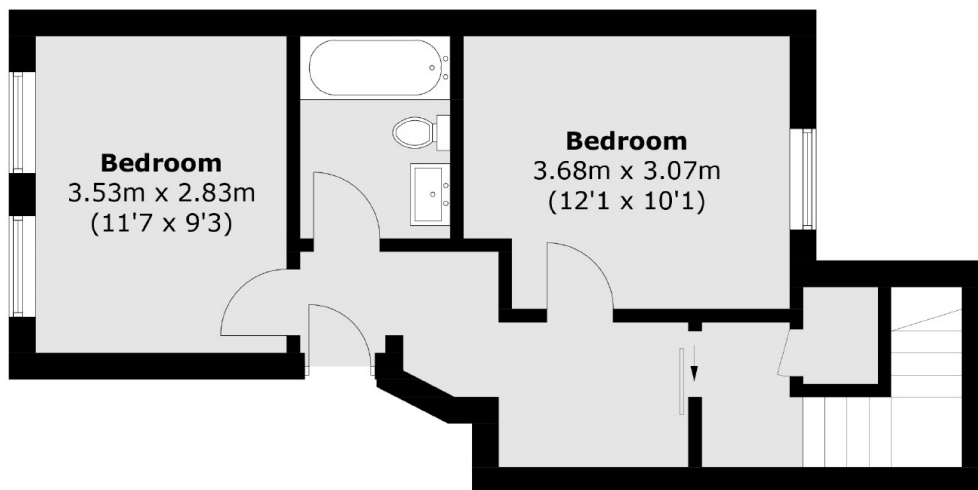
Presenting this split level private garden flat on the lower slopes of Richmond Hill. The property has been very recently renovated throughout to a very high standard of finish, comprises two double bedrooms and one bathroom on the upper ground floor, a shower room and open plan kitchen/dining/reception room on the lower ground floor which also provides direct access out on to the private rear garden via sliding doors. The flat is offered to the market with a long leasehold interest and no onward chain.

Located on Halford Road within the heart of Richmond, the property is well located for the amenities on Richmond Hill, with Richmond Park, Richmond Riverside and Richmond town centre all being close by. Richmond train station offers access to and from London by rail or tube via the District line, South West trains and the London Overground service.

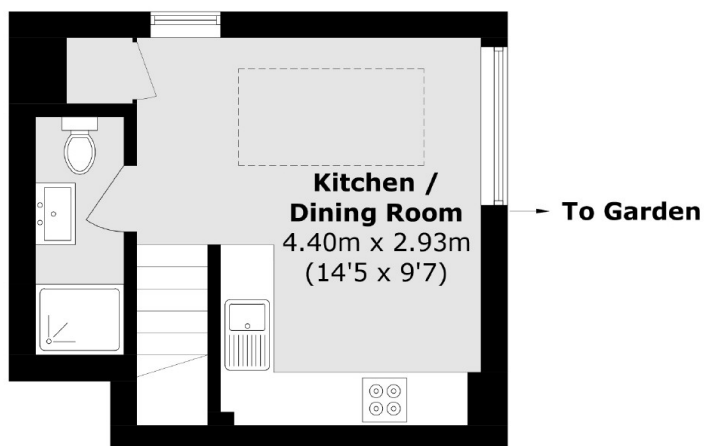
Features

- Private Rear Garden
- Recently Renovated
- Modern
- Two Bedrooms
- Two Bathrooms
- No Onward Chain

Halford Road, Richmond, TW10



Upper Ground Floor



Lower Ground Floor

Total area (approx.): 60.6 sq. m (652.2 sq. ft)