



## Halford Road, TW10

### £850,000

Presenting this spacious split level flat on the lower slopes of Richmond Hill. The property has been renovated throughout, comprises two double bedrooms, one bathroom, a large reception room and an eat-in kitchen all laid out over approximately 971 sqft. The flat is offered to the market with a long leasehold interest and no onward chain.

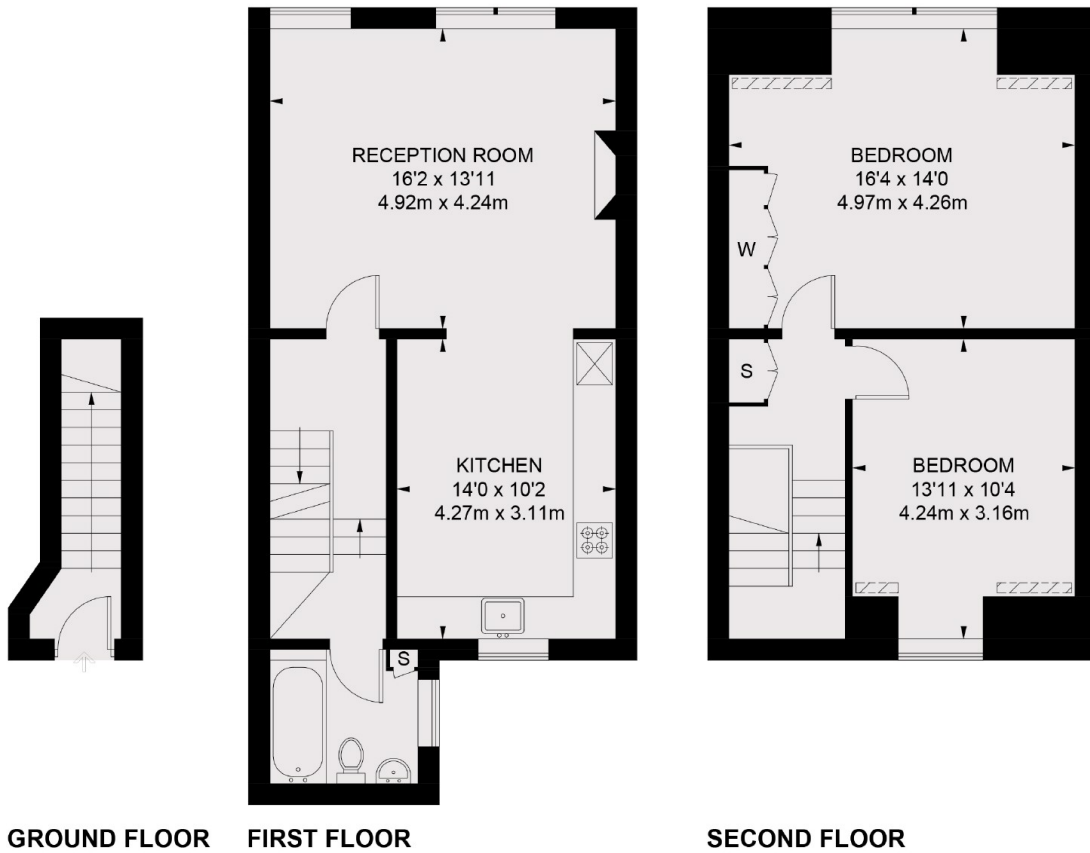
Located on Halford Road within the heart of Richmond, the property is well located for the amenities on Richmond Hill, with Richmond Park, Richmond Riverside and Richmond town centre all being close by. Richmond train station offers access to and from London by rail or tube via the District line, South West trains and the London Overground service.

### Features

- Two Bedrooms
- Modern
- Period Features
- Richmond Hill
- Split Level
- No Onward Chain

# Halford Road, Richmond, TW10

 = REDUCED HEADROOM BELOW 1.5M / 5'0



TOTAL APPROX. FLOOR AREA 971 SQ. FT. (90.2 SQ. M.)