

Dunstable Road, TW9

£425,000

A beautifully presented and contemporary styled ground floor apartment offering approximately 540 sq ft of accommodation. The property makes for an ideal first time purchase, pied-a-terre or would suit an investor.

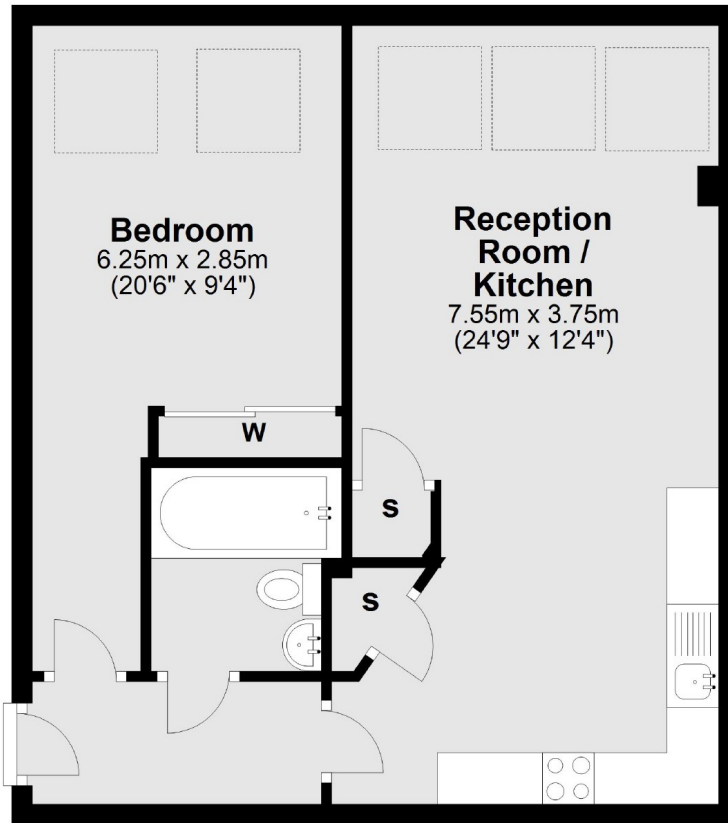
Mill House, Dunstable Road is a quiet no through road conveniently located for Richmond town centre with its array of shops, bars and restaurants Tube and rail services into Central London via the District Line, South West Trains and London Overground are also readily available from Richmond station.

Features

- One Double Bedroom
- Spacious Reception Room
- Open Plan Fitted Kitchen
- Modern Bathroom
- Bicycle Storage Shed
- No Onward Chain

Dunstable Road, Richmond, TW9

Ground Floor



Total area: approx. 49.5 sq. metres (532.9 sq. feet)