



Sheen Court, TW10

£475,000

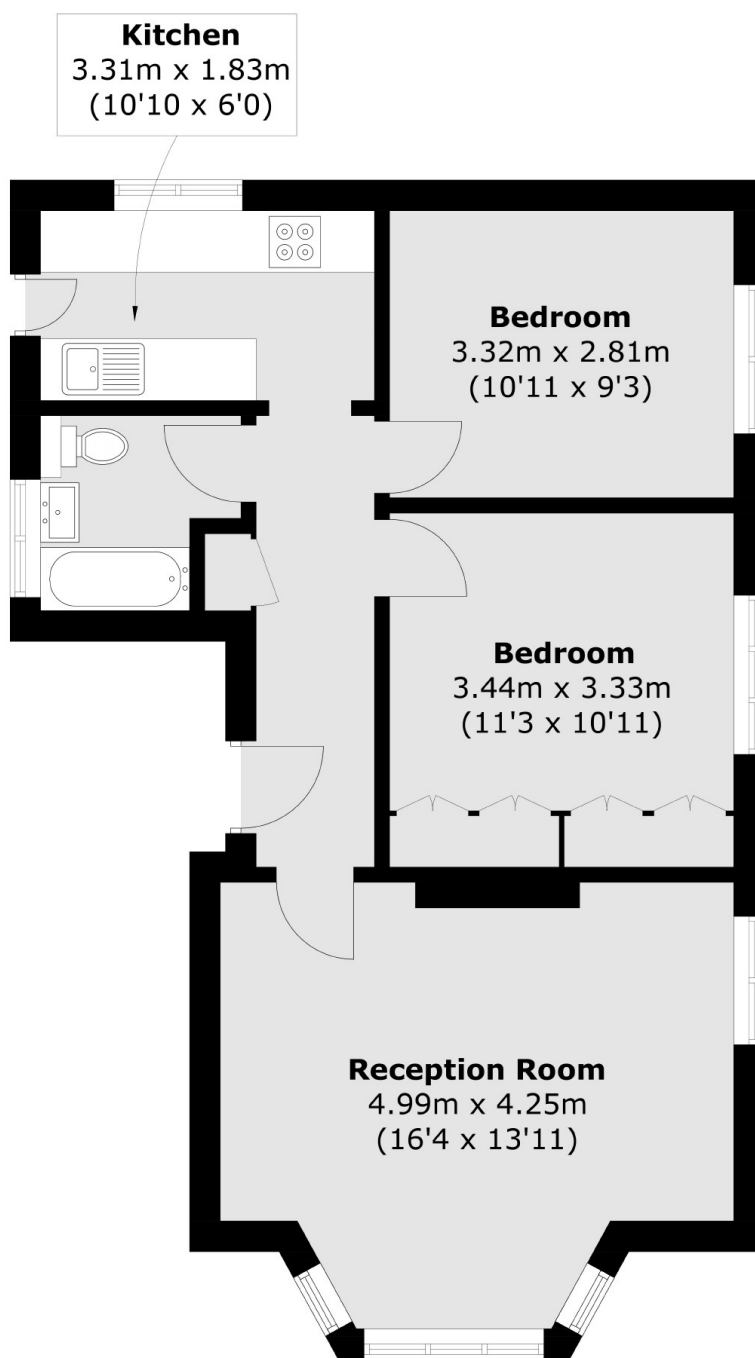
A beautifully bright and spacious two double bedroom apartment situated on the first floor in this popular, private development. The property is presented in good condition and comes with a share of the freehold, ample residents parking, and low service charge costs.

Sheen Court is a well maintained private sought after residential development set within extensive communal grounds. Richmond and North Sheen stations offer tube or rail services into Central London via the District Line, South West Trains and London Overground.

Features

- Two Double Bedrooms
- Great Condition
- Residents Parking
- Heating & Hot Water Included
- Low Service Charge
- Share Of Freehold

Sheen Court, Richmond, TW10



Total area (approx.): 58.0 sq. m (624.3 sq. ft)