



## Lower Mortlake Road, TW9

### £800,000

\*Offers In Excess Of £800,000\*

A Victorian family home offering 1,164 sq ft of accommodation. The property currently has three bedrooms, two bathrooms, a double front reception room and an open plan kitchen/dining room occupying the rear extension.

The house also offers potential to further extend into the loft, STPP, creating a master suite with ensuite bathroom.

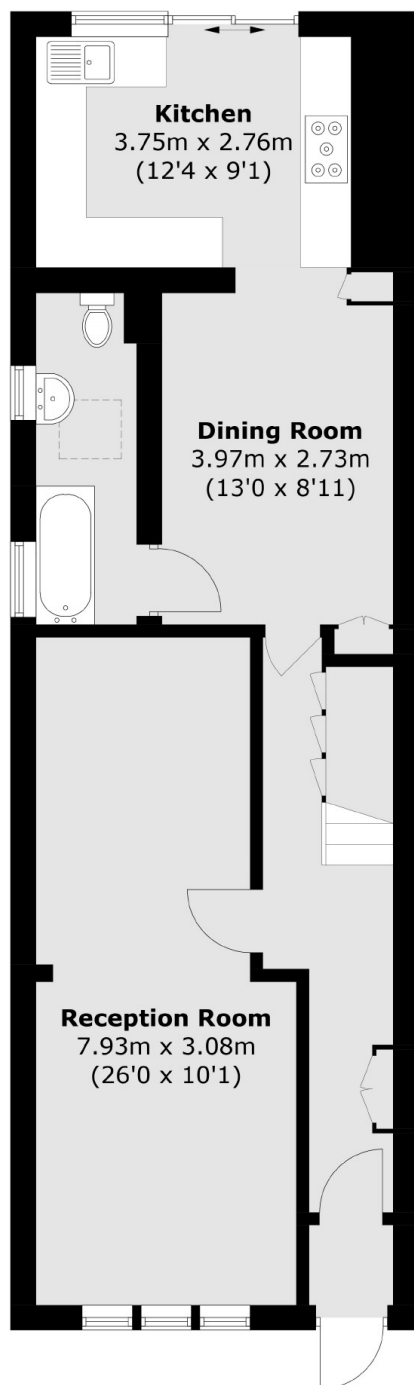
Outside to the rear is a private garden laid to paving with flower and shrub borders and a wooden shed. To the front is a small garden with bin storage.

Lower Mortlake Road provides great access to the town centre of Richmond where a plethora of fine restaurants and eateries can be found amongst a vast array of shops, outstanding transport links, the River Thames and Richmond Park whilst also being conveniently situated close to the Royal Botanic Gardens, Kew and the Old Deer Park area.

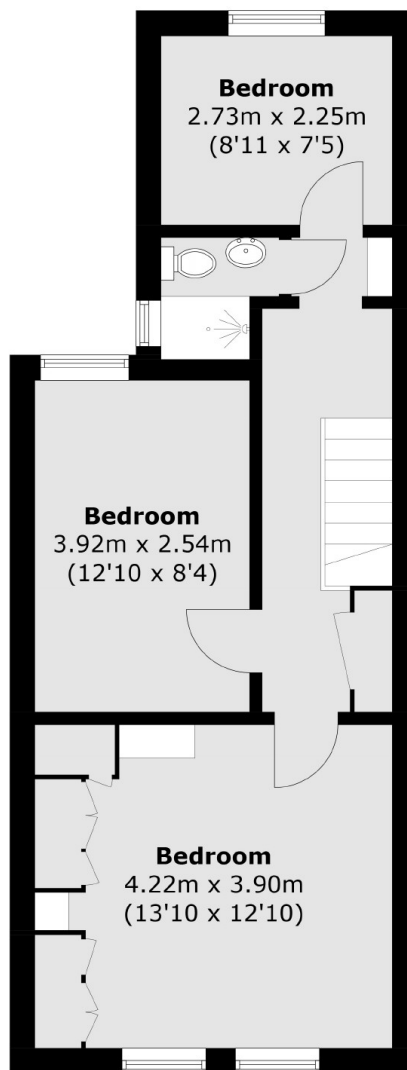
### Features

- Three Bedrooms
- Two Bathrooms
- Double Reception Room
- Kitchen/Dining Room
- Rear Garden
- Extension Potential

# Lower Mortlake Road, Richmond, TW9



**Ground Floor**



**First Floor**

Total area (approx.): 108.2 sq. m (1,164.6 sq. ft)