



Victoria Road, SW14

£1,150,000

A beautifully redesigned and maintained three bedroom, two bathroom home. This charming home is situated on a cherished road and is conveniently located close to Mortlake and Barnes Bridge stations providing easy access to central London. The house has been skilfully extended by a trusted architect and extensively renovated throughout to a high standard.

Victoria Road is superbly located for the shopping amenities of East Sheen and Barnes Village including a number of boutique shops, restaurants and coffee shops. Thomson House and St Mary Magdalen's Catholic Primary Schools are close by along with many areas of natural greenery including Richmond Park and Kew Gardens.

Features

- Victorian House
- Fully Renovated and Extended
- Excellent Condition
- Three Double Bedrooms
- Two Bathrooms
- Off Street Parking



Victoria Road, SW14

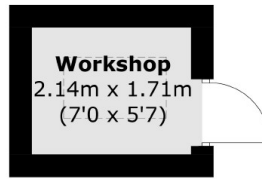
The ground floor accommodation comprises a Victorian terracotta tiled entrance hall which leads to the through reception room with distinct living and dining areas and open plan maple and oak fitted kitchen, as well as an additional reception room/study/downstairs bedroom to the rear of the house, and downstairs shower room. The ground floor features three-zone underfloor heating and engineered oak flooring throughout as well as comprehensive insulation and all new timber frame double glazed windows through the entire house.

The first floor accommodation offers three double bedrooms and a family shower room designed with a high quality marble finish and skylight for additional natural light.

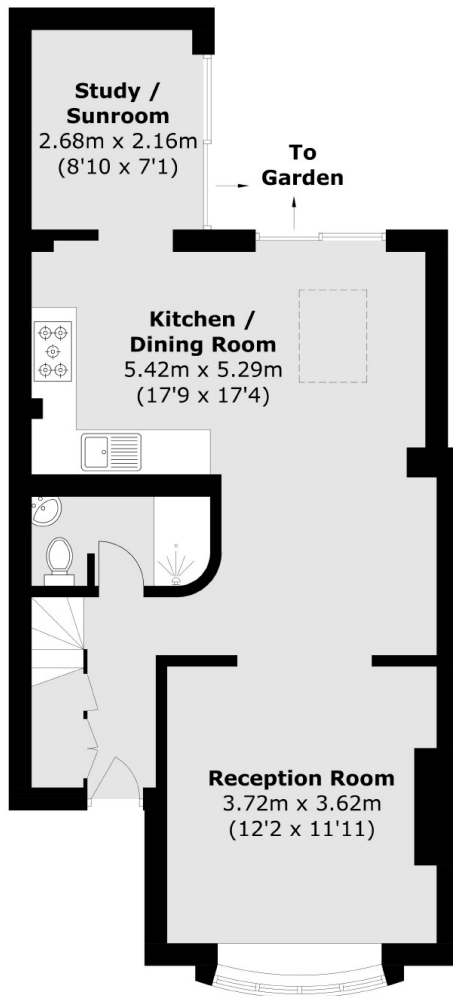
To the front of the property is a long front garden/off street parking space and to the rear is a pretty garden and handy workshop.



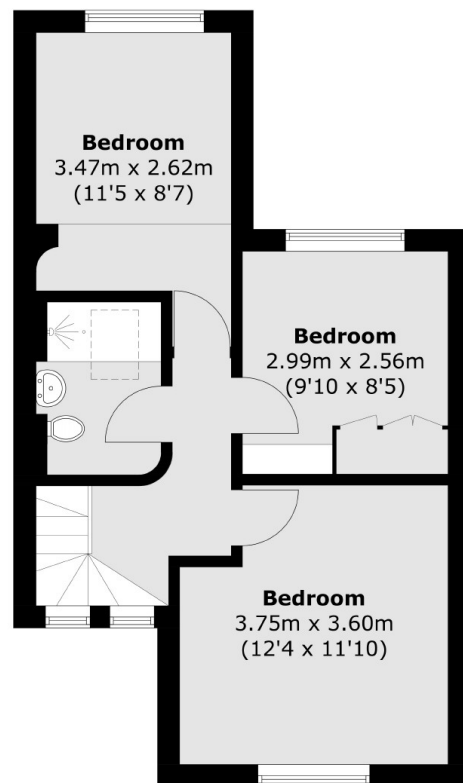
Victoria Road, London, SW14



(Not Shown In Actual
Location / Orientation)



Ground Floor



First Floor

Total area (approx.): 95.1 sq. m (1,023.6 sq. ft)
Workshop area (approx.): 3.8 sq. m (40.9 sq. ft)