



## Upper Richmond Road West, SW14 £375,000

A lovely one bedroom apartment offering approx. 419 sqft of accommodation. The flat comprises a modern open plan kitchen/reception room, a spacious double bedroom and a three piece bathroom. The apartment would make for a perfect first time purchase or buy to let investment and is offered to the market with a long leasehold interest and no onward chain.

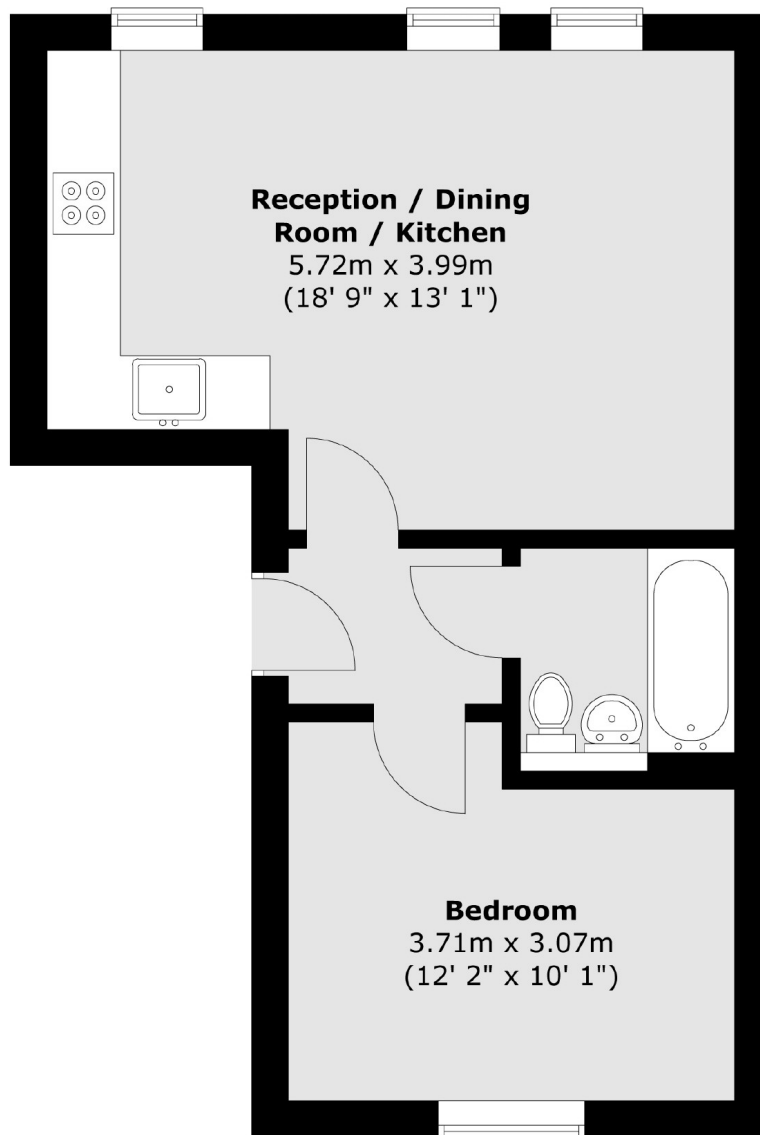
Upper Richmond Road West is perfectly located for the extensive shopping and leisure amenities of East Sheen including Waitrose and a number of gastro pubs, restaurants and coffee shops together with bus routes giving access to Richmond, Putney, Barnes and Hammersmith. Mortlake mainline station which provides regular services to London Waterloo is approximately 0.5 miles away.

### Features

- One Double Bedroom
- Modern Open Plan Kitchen
- Modern Bathroom
- Central East Sheen
- Close to Mortlake Station
- No Onward Chain

# Upper Richmond Road West, London, SW14

## Second Floor



Total area (approx.) : 38.9 sq. m (419 sq. ft)