



Stretton Road, TW10

£4,500 Per calendar month

A beautifully designed four bedroom family house located in a sought-after area close to Grey Court School and The German School among others, as well as Ham Common, Richmond Park and the River Thames. This modernised and well-maintained home is split over three floors with off street parking to the front and a stunning garden studio in the large rear garden.

Stretton Road is close to a selection of local shops and amenities in Ham including Ham Polo Club and Richmond Golf Club. It is also close to the river, Richmond Park the German School, Grey Court and Richmond Park.

Features

- Four Bedrooms
- Fully Extended Garden Studio
- Large Garden
- Ham Common
- Off Street Parking



Stretton Road, TW10

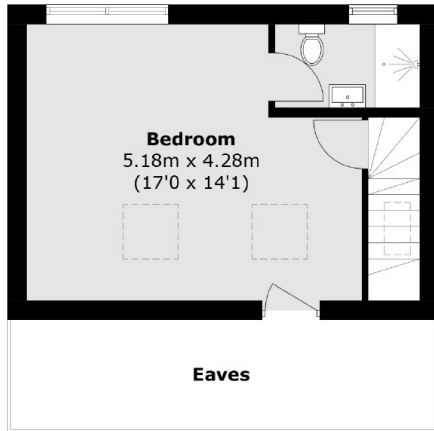
The property is set over three floors and is beautifully presented throughout. The ground floor is made up of a front reception room with wooden flooring, an incredibly large eat-in kitchen/dining room with plenty of space for entertainment, there is also bi-folding doors which leads out to the large garden.

The first floor has three bedrooms and a family-size bathroom, the second floor has been newly converted with amazing garden views and an ensuite.

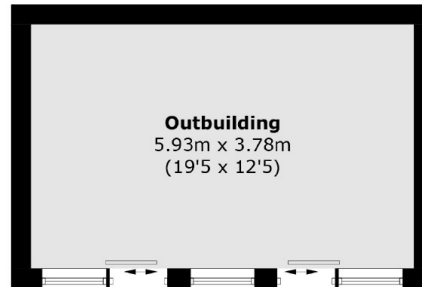
Outside to the front is a driveway providing off street parking two cars. To the rear there is also an outdoor garden studio with side access.



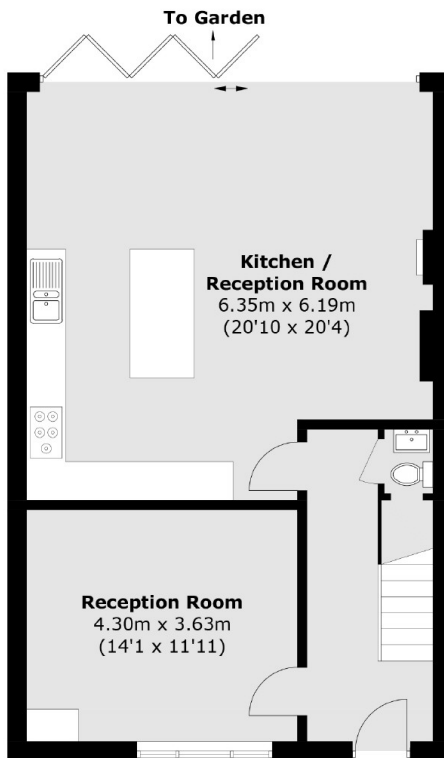
Stretton Road, Ham, TW10



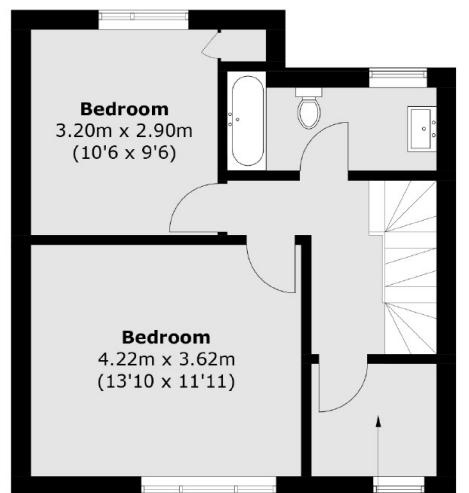
Second Floor



Outbuilding
(Not Shown In Actual
Location / Orientation)



Ground Floor



First Floor

Bedroom
2.04m x 1.76m
(6'8 x 5'9)

Total area (approx.): 132.4 sq. m (1,425.1 sq. ft)
(Excluding Eaves)
Outbuilding area (approx.): 22.6 sq. m (243.3 sq. ft)