



Grosvenor Road, TW10

£395,000

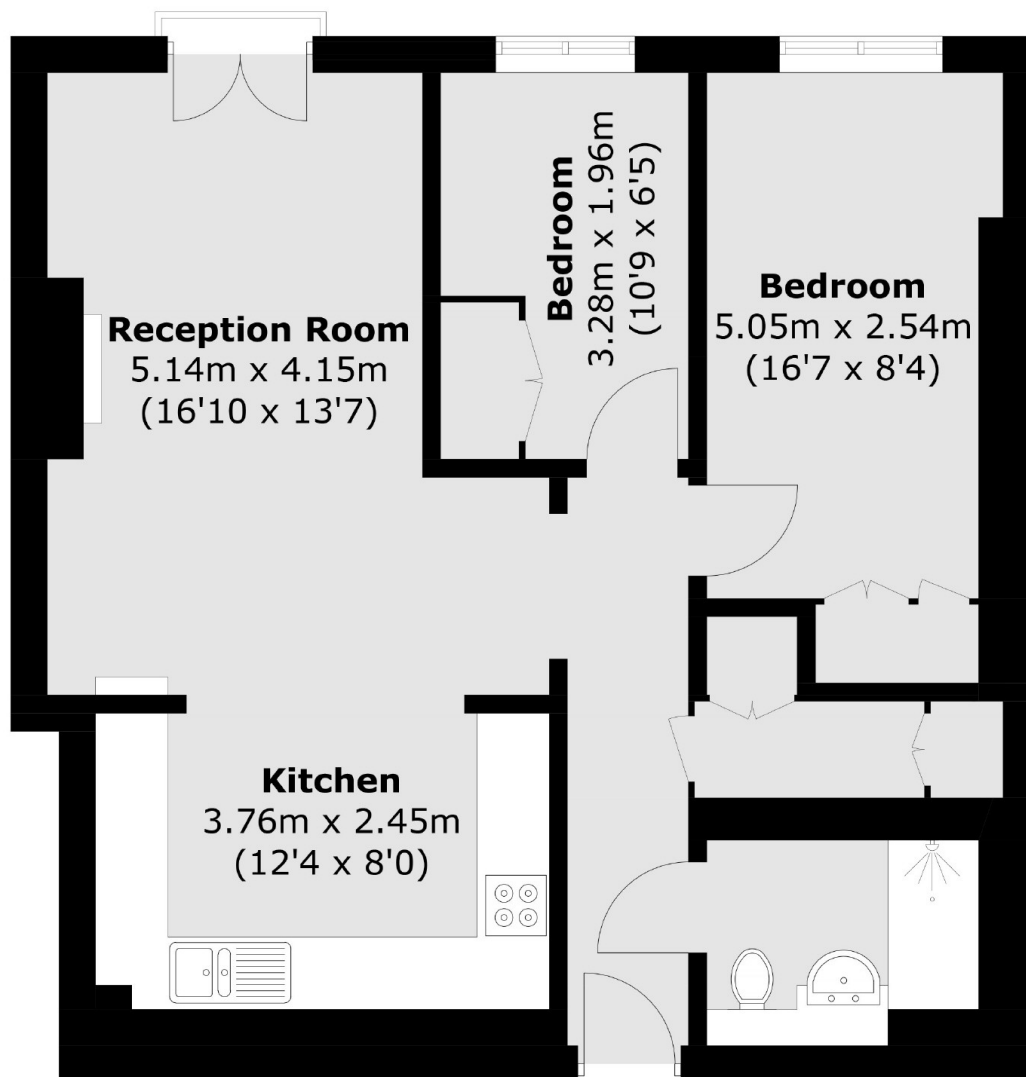
The prestigious Clear Water House, an over 55's residential development, was originally the Vineyard School and dates from 1867. This ground floor apartment offers 658 sq ft of accommodation and no onward chain. The accommodation comprises an entrance hall with storage cupboard, a spacious reception room overlooking the communal grounds, a modern kitchen, a master double bedroom with fitted wardrobes, a second bedroom and a bathroom.

Situated on the corner of Grosvenor Road and The Vineyard in the heart of Richmond, the property is well located for the amenities of Richmond town centre, with Richmond Park, Richmond Riverside and Richmond Hill all close by. Richmond station offers services, to and from London, by tube or rail via the District line, South West trains and the London Overground service.

Features

- Two Bedrooms
- Spacious Reception Room
- Open Plan Kitchen
- Modern Bathroom
- Communal Gardens
- Residents' Parking

Grosvenor Road, Richmond, TW10



Total area (approx.): 61.2 sq. m (658.7 sq. ft)