



Sheen Road, TW9

£950,000

An exquisitely presented garden apartment with its own private entrance situated within this handsome period building. The apartment has been modernised by the current owners to a high specification and offers fantastic entertaining space and natural light in every room.

Sheen Road is ideally located for the amenities of Richmond town centre, with Richmond Park, Richmond Hill and Richmond Riverside all being close by. Richmond train station offers access to and from London by tube or rail via the District line, South West trains and the London Overground service.

Features

- Two Double Bedrooms
- Outstanding Condition
- Marshgate Catchment
- Share Of Freehold
- Spacious Reception Room
- Stunning Garden



Sheen Road, TW9

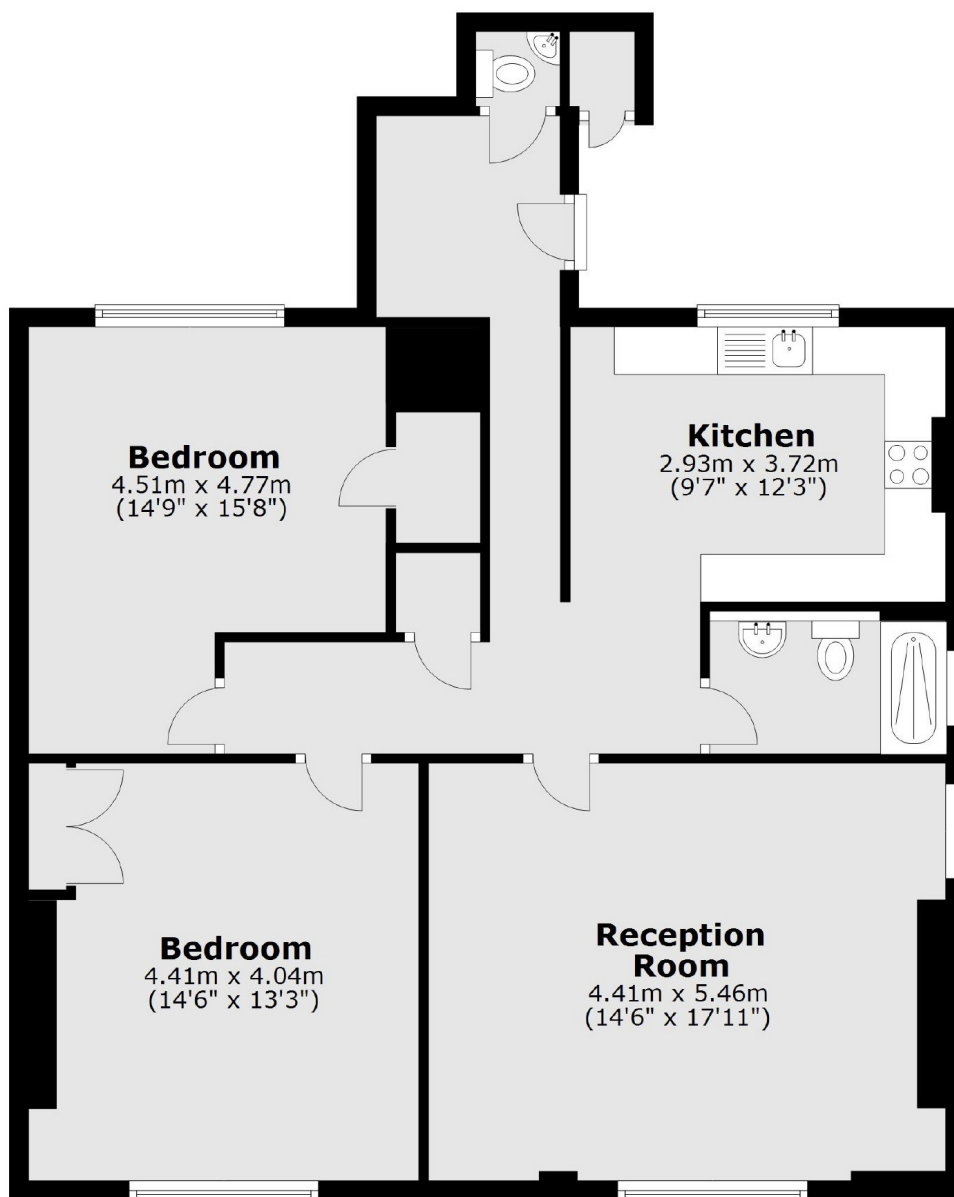
The property is entered via its own private entrance leading to the accommodation which consists of an entrance hall with adjoining w/c, two spacious double bedrooms, a stylishly upgraded kitchen, large reception room flooded with natural light, and a modern family bathroom.

To the rear is a large private garden which consists of a patio lounge area, a large garden laid to lawn and a decked area and shed to the rear.

Some of the area's best schools are located close by, in particular Marshgate Primary School which is described as 'Outstanding' in the latest Ofsted Report.



Sheen Road, Richmond, TW9



Main area: Approx. 92.4 sq. metres (994.7 sq. feet)
Plus store, approx. 0.5 sq. metres (5.9 sq. feet)