



Sheen Court, TW10

£2,100 Per calendar month

Dexters



Sheen Court, TW10

A well presented two bedroom apartment situated in this very popular and well managed private development. The apartment offers access to residents parking and communal gardens.

The building is entered via a secure door with entryphone system into the well maintained communal hallway.

The accommodation consists of an entrance hall which leads to a well proportioned reception room with feature fireplace and large double glazed windows, a modern kitchen, two double bedrooms, and bathroom. The development is well run, with heating and hot water included in the reasonable service charge, as well as access to residents parking and tidy communal gardens. The property would appeal to professionals and families alike as it is centrally located for a number of Ofsted rated outstanding schools.

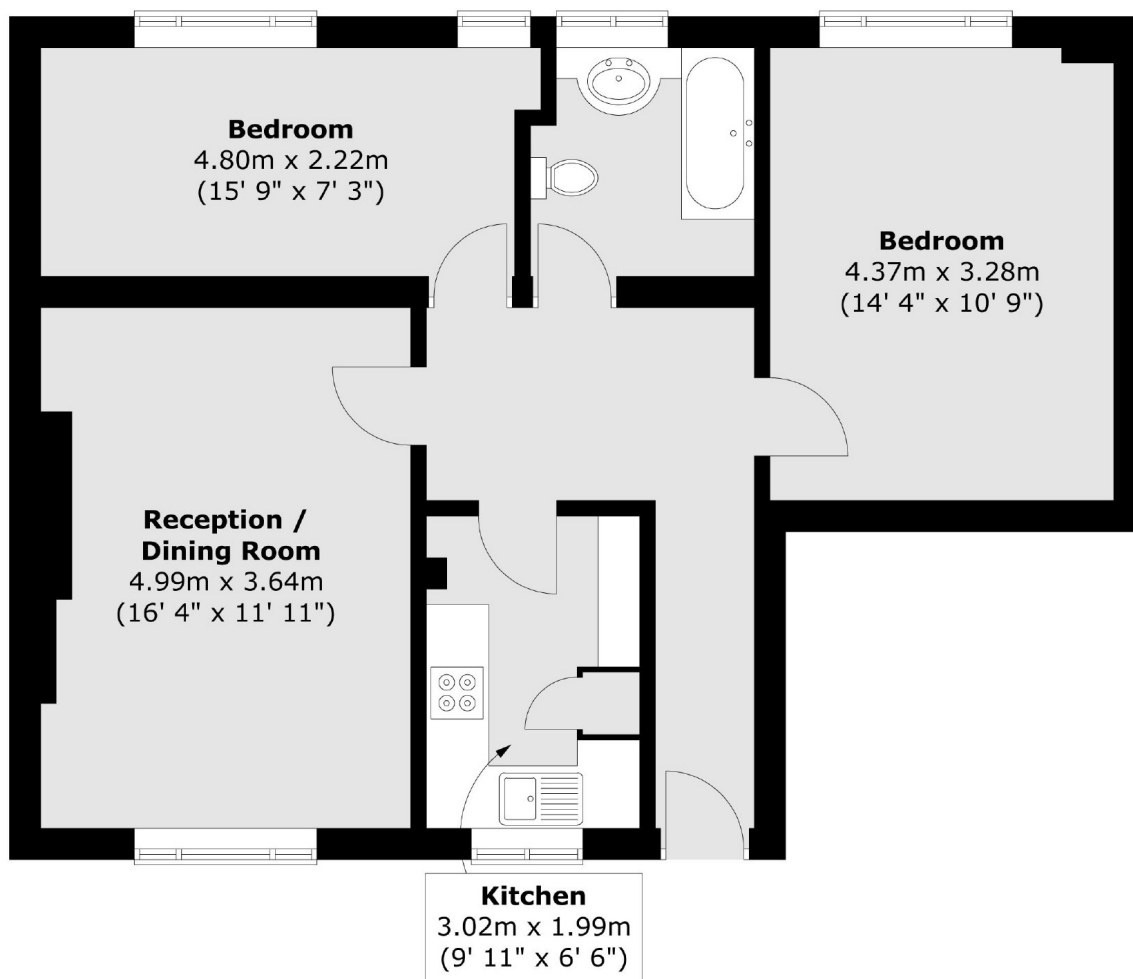
Sheen Court is a well maintained private sought after residential development set within extensive communal grounds. Richmond and North Sheen stations offer tube or rail services into Central London via the District Line, South West Trains and London Overground.

Features

- Two Double Bedrooms
- Gated Development
- Fantastic Location
- Spacious Apartment
- Beautifully Presented
- Ample Storage



Sheen Court, Richmond, TW10



Total area (approx.) : 66.5 sq. m (716 sq. ft)