



## Stretton Road, TW10

£999,950

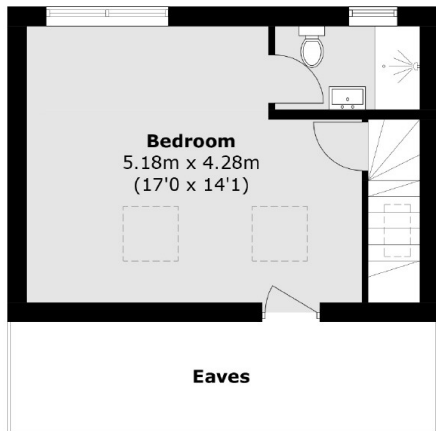
A beautifully designed four bedroom family house located in a sought-after area close to Grey Court School and The German School among others, as well as Ham Common, Richmond Park and the River Thames. This modernised and well-maintained home is split over three floors with off street parking to the front and a stunning garden studio in the large rear garden.

Stretton Road is close to a selection of local shops and amenities in Ham including Ham Polo Club and Richmond Golf Club. It is also close to the river, Richmond Park the German School, Grey Court and Richmond Park.

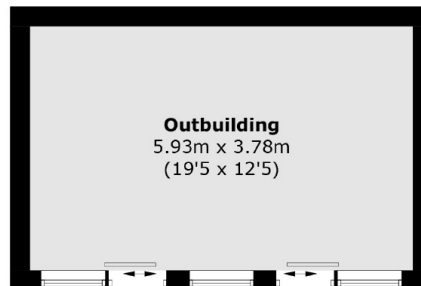
### Features

- Four Bedrooms
- Fully Extended
- Garden Studio
- Large Garden
- Ham Common
- Off Street Parking

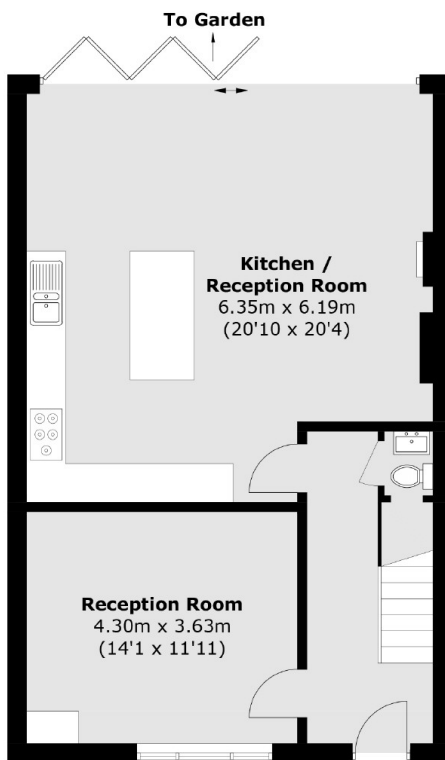
# Stretton Road, Richmond, TW10



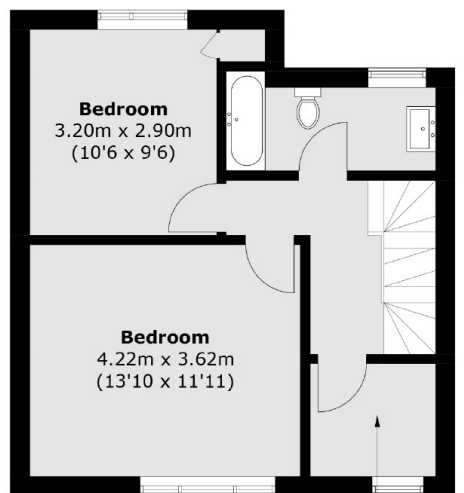
**Second Floor**



**Outbuilding**  
(Not Shown In Actual  
Location / Orientation)



**Ground Floor**



**First Floor**

**Bedroom**  
2.04m x 1.76m  
(6'8 x 5'9)

Total area (approx.): 132.4 sq. m (1,425.1 sq. ft)  
(Excluding Eaves)  
Outbuilding area (approx.): 22.6 sq. m (243.3 sq. ft)