



Grosvenor Road, TW10

£500,000

The prestigious Clearwater House, an over 55's residential development, was originally the Vineyard School and dates from 1867. This ground floor apartment offers 657 sq ft of accommodation, has a south west facing aspect and if offered to the market with a newly extended lease and no onward chain.

Situated on the corner of Grosvenor Road and The Vineyard in the heart of Richmond, the property is well located for the amenities of Richmond town centre, with Richmond Park, Richmond Riverside and Richmond Hill all close by. Richmond station offers services, to and from London, by tube or rail via the District line, South West trains and the London Overground service.

Features

- Two Double Bedrooms
- Spacious Reception Room
- Separate Kitchen
- Modern Bathroom
- Communal Gardens
- Residents' Parking



Grosvenor Road, TW10

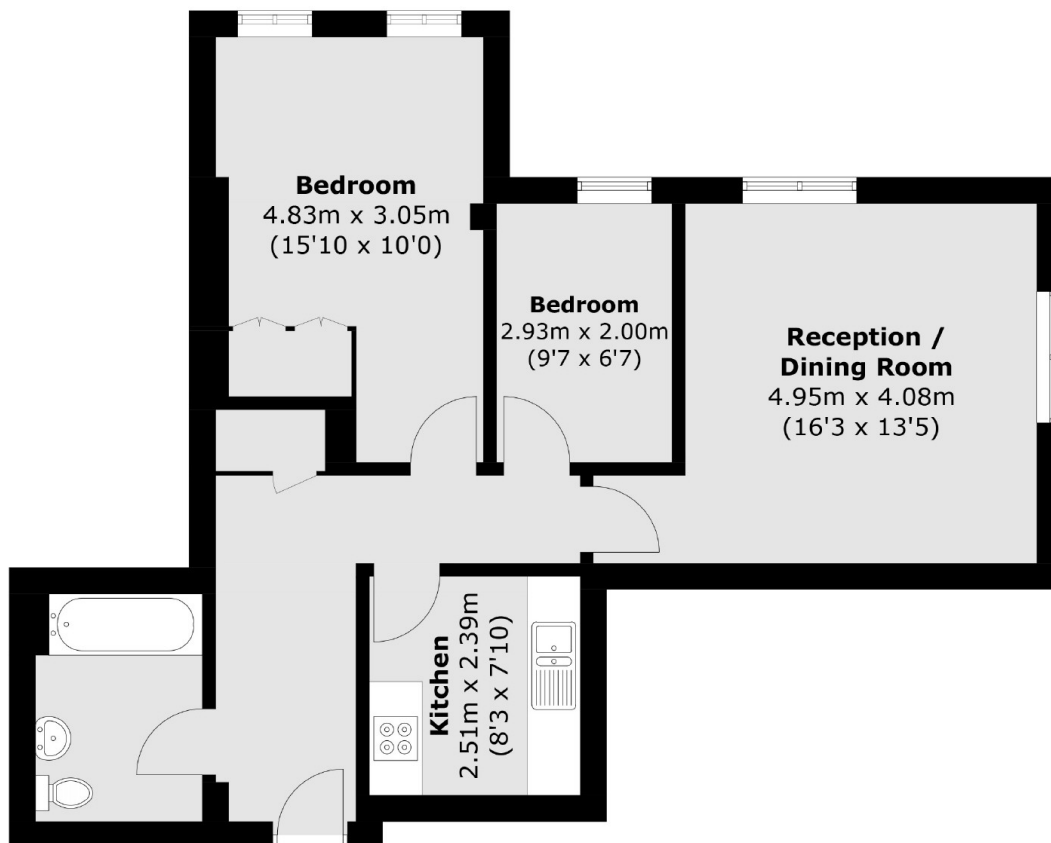
Clear Water House is entered via a communal entrance door with secure entry phone system and provides access to the ground floor communal hallway.

The accommodation comprises an entrance hall with storage cupboard, a light spacious double aspect reception room overlooking the communal gardens, a modern fitted kitchen, a master double bedroom with fitted wardrobes, a second double bedroom and a modern bathroom.

To the outside are lovely well maintained and established gardens with areas laid to lawn with flower and shrub displays. There is parking for residents and visitors. The property further benefits from resident management staff, careline alarm service and a residents' meeting room.



Grosvenor Road, Richmond, TW10



Total area (approx.): 61.1 sq. m (657.7 sq. ft)