



Grosvenor Road, TW10

£325,000

The prestigious Clear Water House, an over 55's residential development, was originally the Vineyard School and dates from 1867. This split level first and second floor apartment offers 708 sq ft of accommodation.

Located on the corner of Grosvenor Road and The Vineyard within the heart of Richmond, the property is well located for the amenities on Richmond Hill, with Richmond Park, Richmond Riverside and Richmond town centre all being close by, Richmond station offers services, to and from London, by tube or rail via the District line and South West trains.

Features

- One/Two Bedrooms
- Two/One Reception Rooms
- Fitted Kitchen
- Bathroom
- Communal Gardens
- Residents Parking



Grosvenor Road, TW10

The property is entered via a communal entrance hall with secure entry phone system and provides lift and staircase access to the first floor communal landing.

The first floor accommodation consists of an entrance hall with storage cupboard, a spacious reception room leading to a fitted kitchen, a double bedroom with a fitted wardrobe and a modern bathroom.

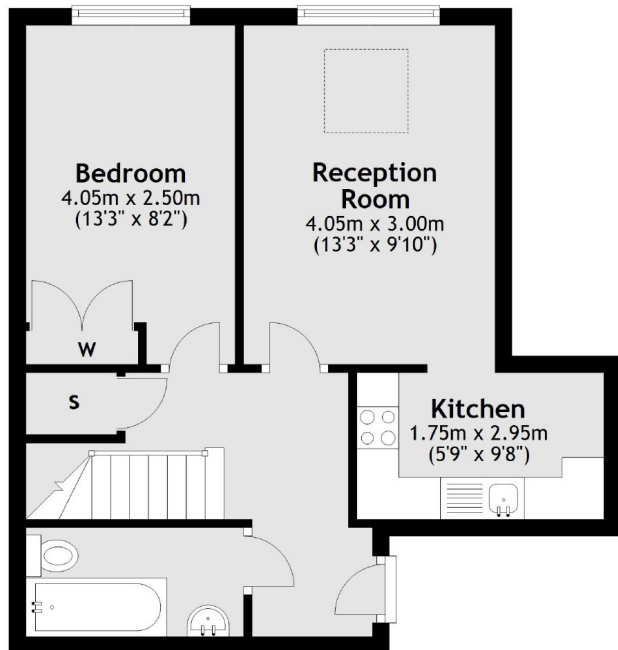
The second floor accommodation consists of a landing and a galleried L-shaped reception room which could be used as a second bedroom as there is a wall-to-wall storage cupboard providing space for a single bed.

The property further benefits from resident management staff, careline alarm service and is offered with immediate vacant possession and no forward chain.

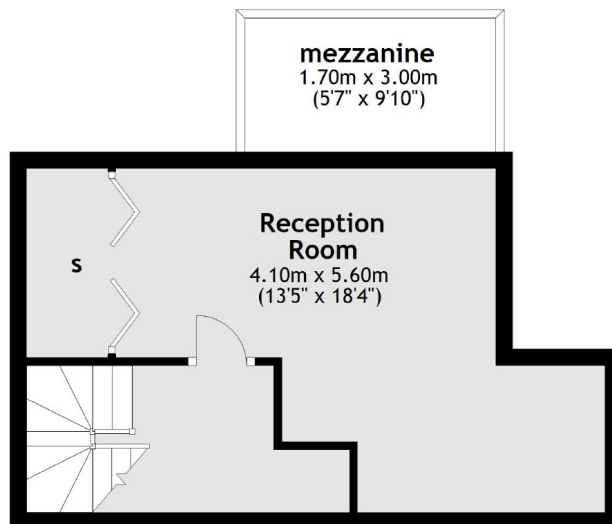


Grosvenor Road, Richmond, TW10

First Floor



Second Floor



Total area: approx. 65.8 sq. metres (708.2 sq. feet)