



Richmond Hill Court, TW10

£785,000

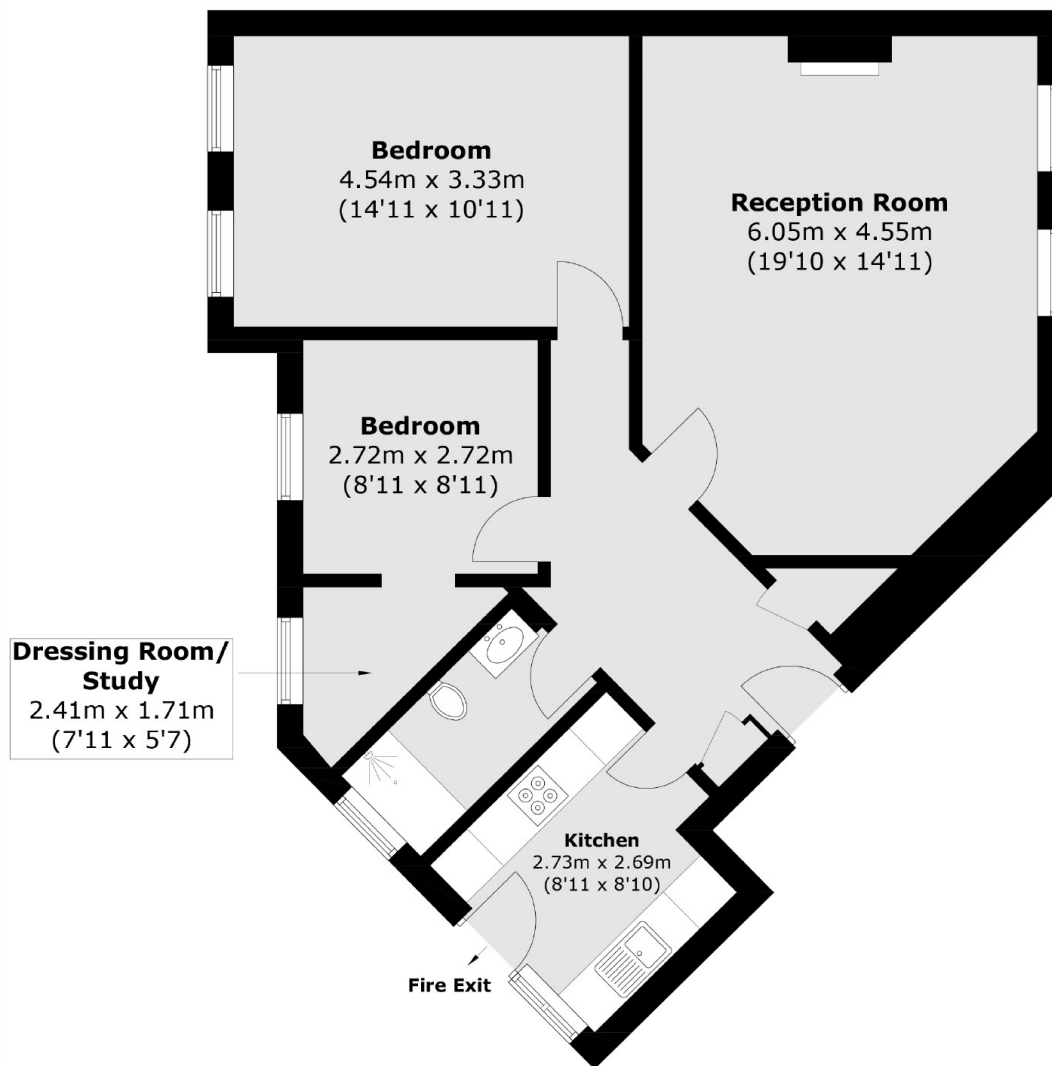
A beautifully presented third floor corner apartment set within a handsome and iconic period mansion block building. The property has been professionally designed by an interior architect to a very high standard and offers approximately 806 sq ft of accommodation.

Richmond Hill Court is located on Richmond Hill, with Richmond Village, Richmond Park, Terrace Gardens, Richmond Riverside and Richmond town centre all being close by. Richmond train station offers access to and from London by tube or rail via the District line, South Western trains & London Overground service.

Features

- Two Double Bedrooms
- Spacious Reception Room
- Wren Kitchen
- Modern Bathroom
- On Site Porter
- No Onward Chain

Richmond Hill Court, Richmond, TW10



Total area (approx.): 74.9 sq. m (806.2 sq. ft)