



Kenmore Close, TW9

£500,000

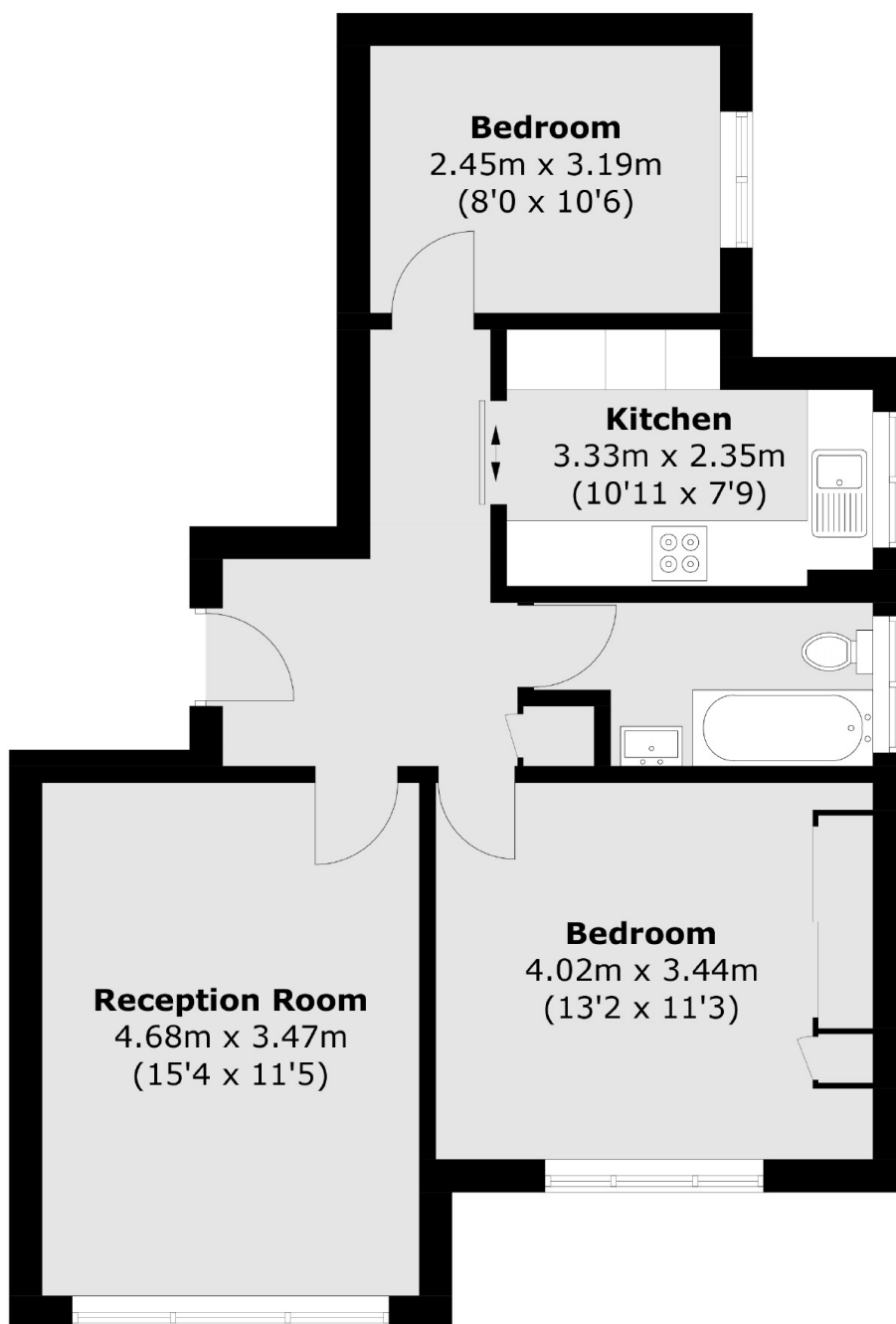
An opportunity to purchase this second floor purpose built apartment offering approximately 647 sq ft of accommodation. The property has been refurbished throughout, has original wooden floors, two bright bedrooms, modern kitchen, modern three piece bathroom, comes with off street parking on a first come first serve basis, access to a communal store room, and is offered to the market with a Share of Freehold and no onward chain.

Kenmore Close is ideally located for the amenities of Kew Village, as well as the Royal Botanic Gardens Kew and Richmond Park. The commuter is extremely well catered for with Kew Gardens station close to hand offering access to the District Line and Overground with additional excellent bus services to Central London.

Features

- Share Of Freehold
- Two Bedrooms
- Modern Kitchen
- Modern Bathroom
- Off Street Parking
- No Onward Chain

Kenmore Close, Kew, TW9



Total area (approx.): 60.1sq. m (646.9 sq. ft)