



## Sheen Road, TW9

£600,000

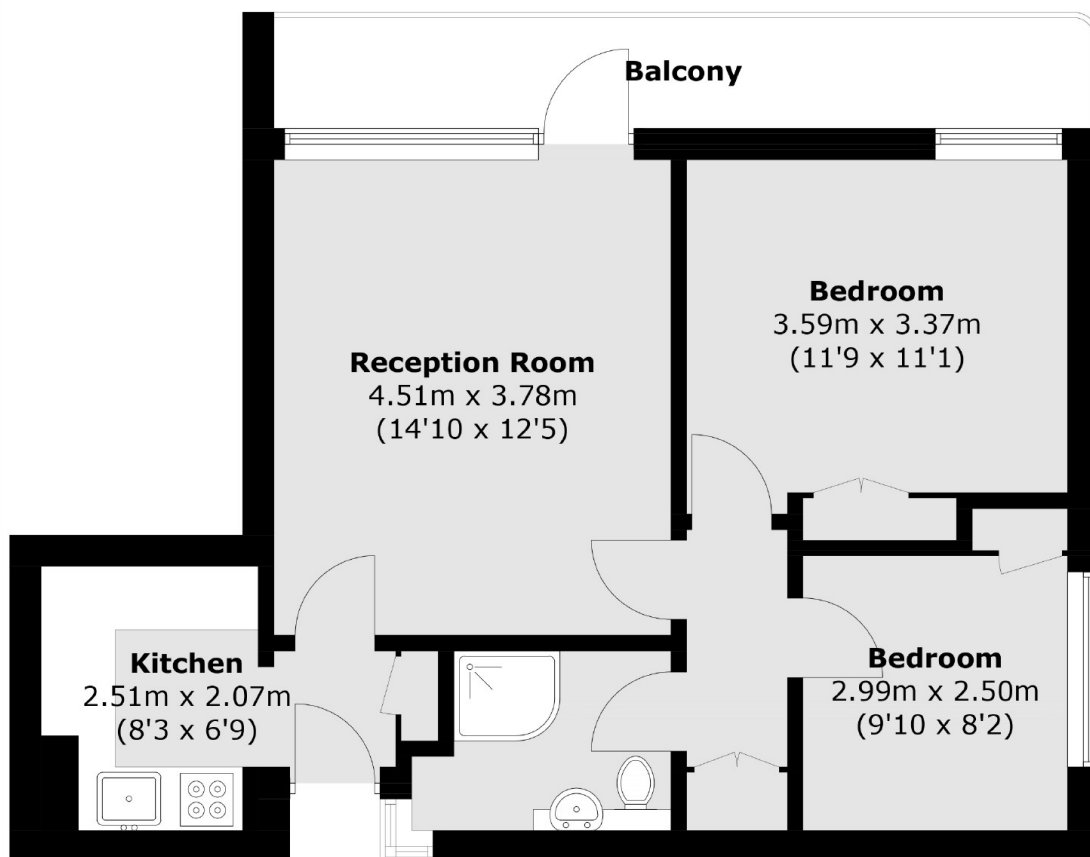
Set within an iconic Art Deco Grade II Listed building is this immaculate two bedroom, top floor apartment offering a large west-facing balcony with far-reaching views over Richmond and beyond across London. The apartment comes with a share of freehold, an on-site porter offering 24/7 security, residents off street parking with EV charging points, and no onward chain, as well as the rare benefit of Daikin air conditioning.

Lichfield Court is ideally located for Richmond's array of shopping and leisure amenities including Richmond Park and the River Thames. Richmond train station offers access to London via the District line, South Western trains and the London Overground service.

### Features

- Top Floor Flat with Lift Access
- Large Balcony
- Views Over Richmond
- Share Of Freehold
- Off Street Parking
- No Onward Chain

# Sheen Road, Richmond, TW9



## Fourth Floor

Total area (approx.): 52.5 sq. m (565.1 sq. ft)  
Balcony area : 8.1 sq. m (87.2 sq. ft)