

## Upper Richmond Road West, SW14

£2,250 Per calendar month

**Dexters**



## Upper Richmond Road West, SW14

This two bedroom apartment set to a high standard throughout offers open plan living space, wooden floors throughout, balcony and modern bathroom.

Upper Richmond Road West is ideally located for the extensive shopping and leisure amenities of East Sheen including Waitrose and a number of restaurants and cafes, together with bus routes giving access to Richmond, Putney and Barnes. Mortlake mainline station which provides regular services to London Waterloo is approximately 0.4 miles away.

### Features

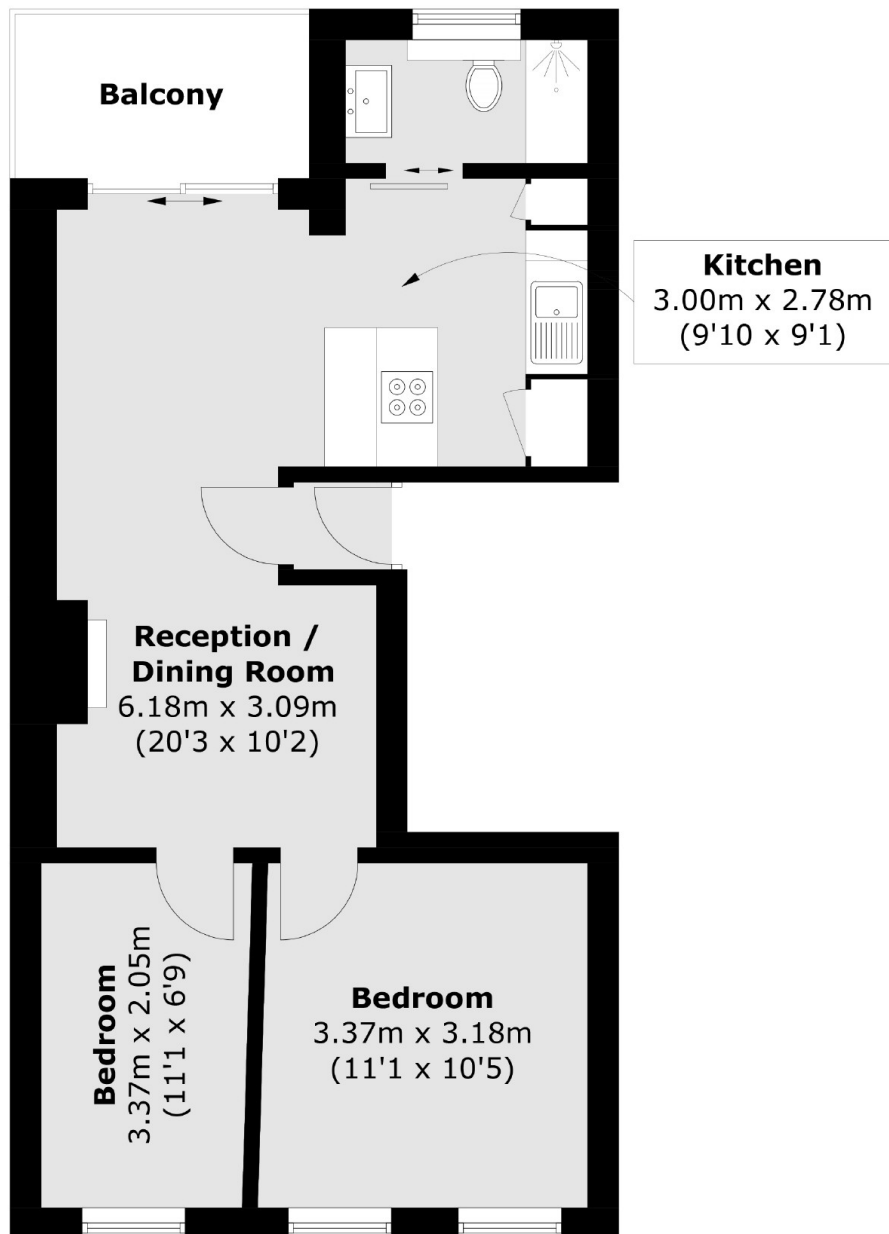
- Two Bedrooms
- High Specification
- Open Plan Living Space
- Modern Bathroom
- Wooden Floors
- Balcony







# Upper Richmond Road West, London, SW14



Total area (approx.): 46.9 sq. m (504.8 sq. ft)  
Balcony: 4.6 sq. m (49.5 sq. ft)