



## St. Marys Grove, TW9

£330,000

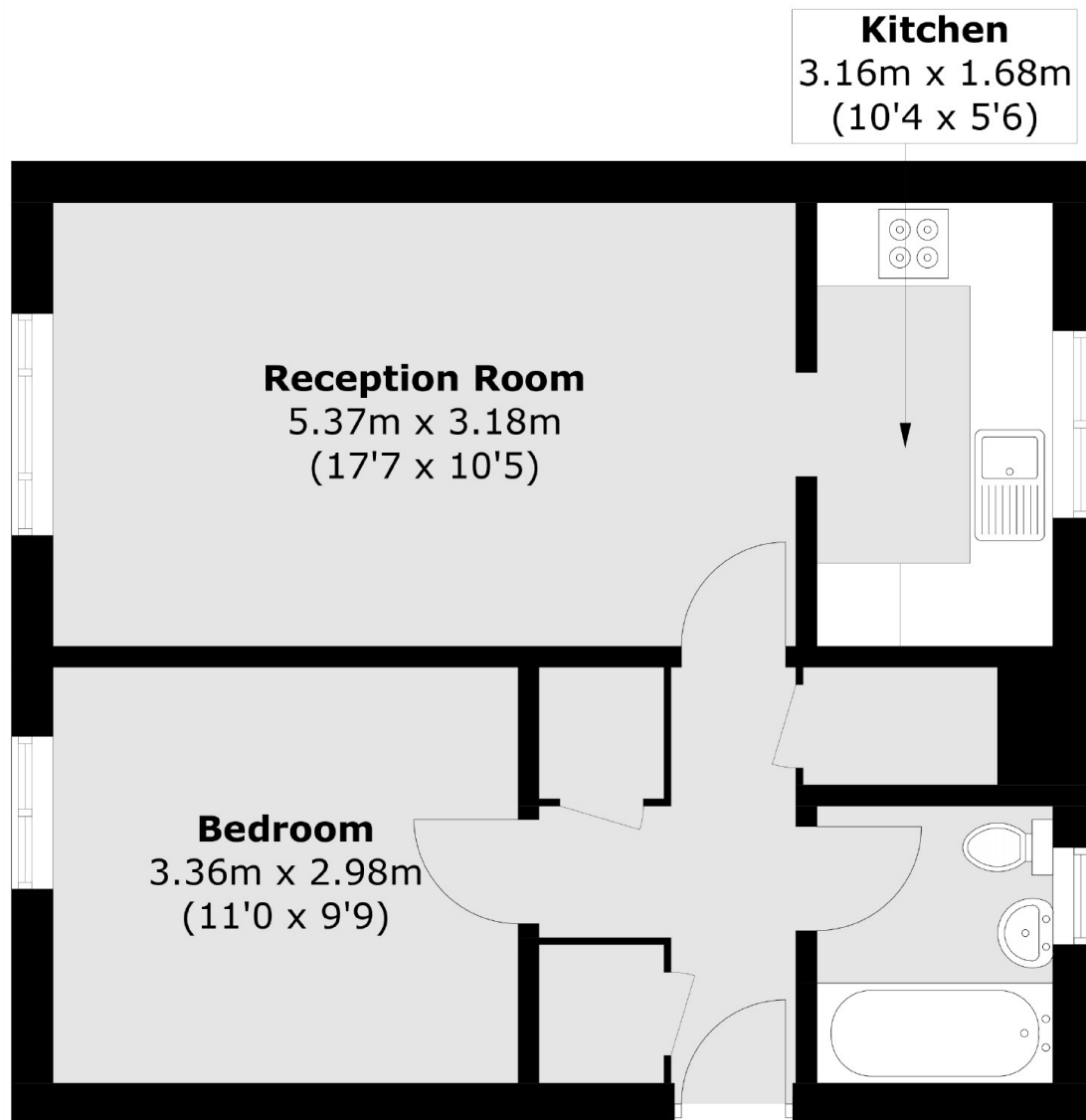
A one double bedroom purpose built apartment situated within a small development on a quiet residential road. The property is located on the first floor, comes with an allocated storage unit and is offered to the market with no onward chain.

St. Marys Grove is ideally located for the amenities of Richmond town centre, with Richmond Park, Richmond Hill and Richmond Riverside all being close by. Richmond train station offers access to and from London by tube or rail via the District line, South West trains and the London Overground service.

### Features

- One Double Bedroom
- Spacious Reception Room
- First Floor
- Additional Storage Unit
- Residents Parking
- No Onward Chain

# St. Marys Grove, Richmond, TW9



Total area (approx.): 45.8 sq. m (493.0 sq. ft)

**Dexters**

Richmond  
1 Sheen Road  
Richmond  
TW9 1AD  
Sales  
020 8288 9988

Energy Rating: C. We aim to make our particulars both accurate and reliable. However they are not guaranteed; nor do they form part of an offer or contract. If you require clarification on any points then please contact us, especially if you're traveling some distance to view. Please note that appliances and heating systems have not been tested and therefore no warranties can be given as to their good working order.

 **RICS** | Regulated  
Estate Agent  
and Letting Agent

[dexters.co.uk](http://dexters.co.uk)