



Lower Mortlake Road, TW9

£550,000

Vetro House is a landmark building designed and built by Quad, an award winning local architect in 2006. At approximately 730 sq ft, this bright and spacious contemporary styled apartment makes for an ideal first time purchase, pied-a-terre or rental investment.

Lower Mortlake Road provides great access to the town centre of Richmond where a plethora of fine restaurants and eateries can be found amongst a vast array of shops, outstanding transport links, the River Thames and Richmond Park whilst also being conveniently situated close to the Royal Botanic Gardens, Kew and the Old Deer Park area.

Features

- Two Double Bedrooms
- Spacious Reception Room
- Open-Plan Kitchen
- Two Modern Bathrooms
- Underground Parking Space
- No Onward Chain



Lower Mortlake Road, TW9

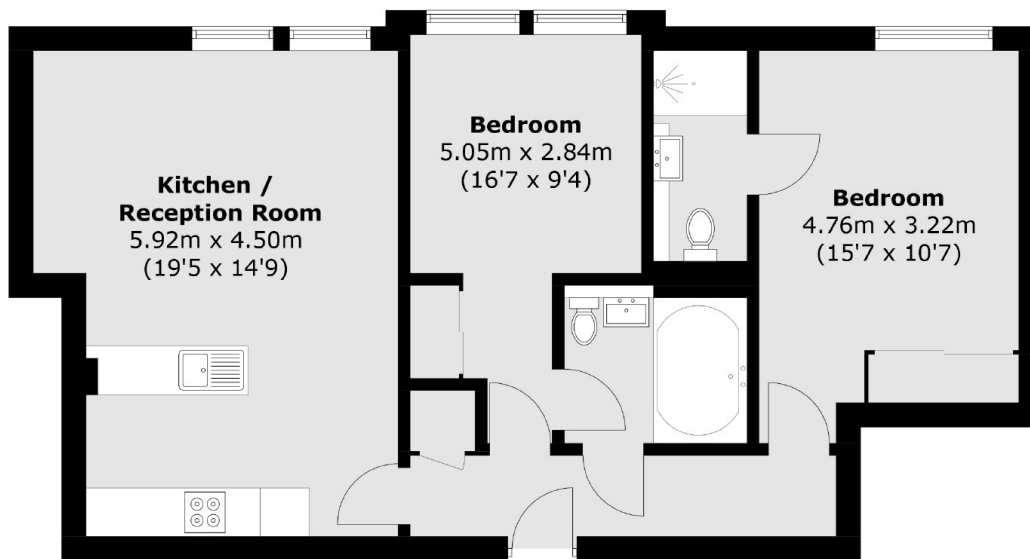
This fabulous apartment is approached by a well-maintained communal hallway with entry phone and staircase/lift service to the first floor. The property has excellent room sizes and is beautifully presented throughout.

There is a master double bedroom with built-in floor-to-ceiling wardrobes and ensuite shower room, a further double bedroom with jack-and-jill three piece bathroom and a spacious open plan kitchen/reception room.

The property also comes with a secure allocated underground parking space, which is accessed from Sheendale Road, and is offered no forward chain.



Lower Mortlake Road, Richmond, TW9



Total area (approx.): 67.8 sq. m (729.8 sq. ft)