



Friars Stile Road, TW10

£535,000

A rare opportunity to purchase a stylish first floor period apartment offering 608 sq ft of accommodation on Richmond Hill. The property is entered via a well maintained communal entrance hall with staircase leading to the first floor communal landing.

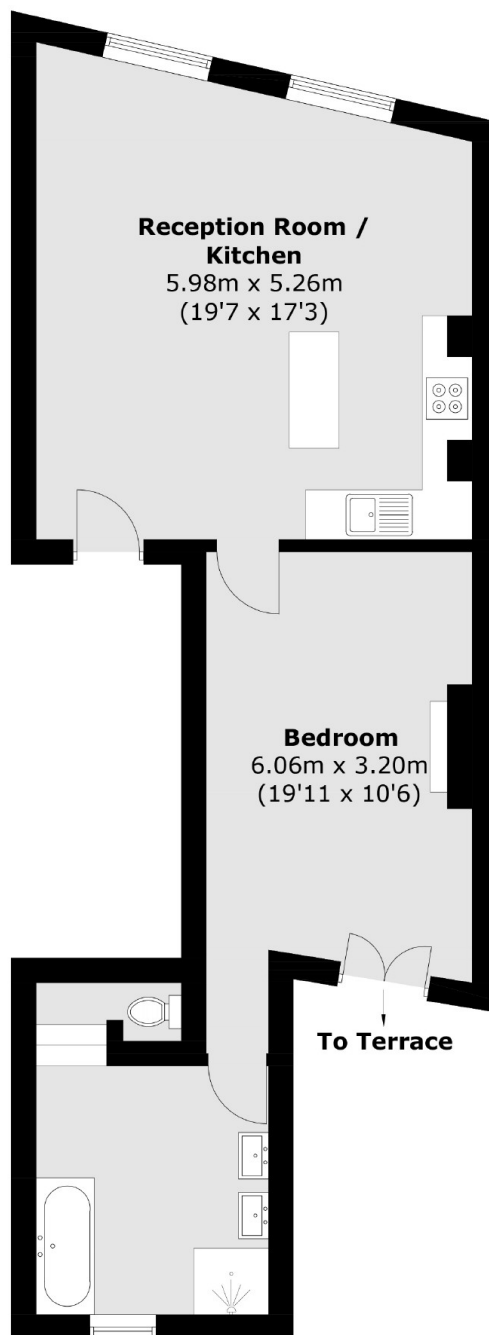
The accommodation consists of a spacious open plan reception room with modern fitted kitchen, which boasts high ceilings, wooden flooring and double sash windows, a large double bedroom with feature fireplace and french doors leading to the private rear roof terrace laid to decking, and a very large bathroom with utility area.

Friars Stile Road is well located for the amenities on Richmond Hill, with Richmond Park, Terrace Gardens, Richmond Riverside and Richmond town centre all being close by. Richmond train station offers access to and from London by tube or rail via the District line, South Western trains and the London Overground service.

Features

- Spacious Period Apartment
- High Ceilings
- Wood Floors
- Richmond Village
- Private Roof Terrace
- No Onward Chain

Friars Stile Road, Richmond, TW10



Total area (approx.): 56.5 sq. m (608.1 sq. ft)

Dexters

Richmond
1 Sheen Road
Richmond
TW9 1AD

Sales
020 8288 9988

Energy Rating: E. We aim to make our particulars both accurate and reliable. However they are not guaranteed; nor do they form part of an offer or contract. If you require clarification on any points then please contact us, especially if you're traveling some distance to view. Please note that appliances and heating systems have not been tested and therefore no warranties can be given as to their good working order.

 **RICS** | Regulated
Estate Agent
and Letting Agent

dexters.co.uk